

LOS ANGELES COUNTY
DEPARTMENT OF PUBLIC WORKS

BENCH MARK LIST



BELLFLOWER QUAD
LAKEWOOD QUAD
SOUTH GATE QUAD

1990 ADJUSTMENT

PREFACE 1990

The Department of Public Works level net is composed of more than 1,700 miles of levels supporting in excess of 9,000 bench marks. In 1990, a major readjustment of the Baseline and nets was undertaken. To emphasize the complete break with previous elevations, the CY, CG & CL series bench marks have been relabeled DY, DG, & DL, respectively.

To facilitate the adjustment, indexing, and distribution of adjusted values of the net, the County territory is divided into 33 quads or areas. For identification purposes each quad is given a name, viz., "Rosemead," "La Mirada," "Santa Fe", etc. When bench marks and elevations in these nets are used, the name of the quad and the date of the adjustment must be included in the bench mark description, e.g.,

DY 9701 - RDBM TAG IN CB 5FT S/O BCR @ SE COR BOLSA ST & DOMINGUEZ ST
63FT S & 20FT E/O C/L INT
(GARDENA - 1990) ELEV. 16.704

Experience indicates that this general adjustment will, for the most part, remain sound for the next 10 years. Updating constrained adjustments will be made in 5 years. It is expected that these updating adjustments will be in the nature of a few hundredths of a foot. When a quad is readjusted, new elevation lists will be published and the date of the readjustment will be noted in the bench mark description. Two bench marks with different adjustment dates will not normally agree with each other.

The basic accuracy of the net is reflected by an indicated field probable error of plus or minus 0.012 foot per mile of leveling as determined from over 600 conditions of closure. However, many years experience in vertical control in the greater Los Angeles basin and Antelope Valley indicate that because of varying degrees of subsidence and heaving, the true datum is recovered only by obtaining substantial agreement of a number of bench marks.

The users of this net are invited to assist in its maintenance by notifying this Department of cases of obliteration, apparent mistakes in descriptions or elevations, and proven disturbance of bench marks.

DATUM: U.S. Coast and Geodetic Survey Sea Level Datum
of 1929, through the medium of the Los Angeles
County Engineer Precise Level Net.

ABBREVIATIONS USED IN BENCH MARK LISTINGS

| | | | |
|----------------|--------------------------|-------------|------------------------|
| ABUT ----- | Abutment | ECR ----- | End of Curb Return |
| ALG ----- | Along | EC ----- | End of Curve |
| ANG PT ----- | Angle Point | ENT ----- | Entrance |
| B/W ----- | Back of Walk | FL ----- | Floor |
| BCR ----- | Beginning of Curb Return | FTG ----- | Footing |
| BC ----- | Beginning of Curve | FRWY ----- | Freeway |
| BLDG ----- | Building | F/W ----- | Front of Walk |
| BM ----- | Bench Mark | GAR ----- | Garage |
| BT SPK ----- | Boat or Bolt Spike | HDWL ----- | Headwall |
| BR CAP ----- | Brass or Bronze Cap | HSE ----- | House |
| C B ----- | Catch Basin | HWY ----- | Highway |
| CTR ----- | Center | INT ----- | Intersection |
| C/L ----- | Center Line | IP ----- | Iron Pipe |
| C/L INT ----- | Center Line Intersection | LT ----- | Left |
| C/L PROD ----- | Center Line Produced | LACE ----- | L.A. City Engineer |
| CONC ----- | Concrete | LACS ----- | L.A. Co. Engineer |
| COR ----- | Corner | LAFC ----- | L.A. Co. Flood Control |
| COE ----- | Corps of Engineers | L&BN ----- | Lead and Bench Nail |
| CULV ----- | Culvert | L&BR ----- | Lead and Brad |
| CYN ----- | Canyon | L&N ----- | Lead and Nail |
| CB ----- | Curb | L&SPK ----- | Lead and Spike |
| CS MON ----- | Co. Eng. Monument | L&T ----- | Lead and Tack |
| CT SPK ----- | Cut Spike | MCR ----- | Middle of Curb Return |
| DPW ----- | Dept. of Public Works | MKD ----- | Marked |
| DR ----- | Drive or Driveway | MC ----- | Middle of Curve |
| E/O ----- | East of | MON ----- | Monument |

ABBREVIATIONS USED IN BENCH MARKS (CON'T)

N/O ----- North of
NR ----- Near
OPP ----- Opposite
PI ----- Point of Intersection
PK&W ----- PK Nail and Washer
P/L ----- Property Line
POST ----- Point of Semi-Tangent
PP ----- Power Pole
PVMT ----- Pavement
PROD ----- Produced
RD ----- Road
RDBM ----- Road Dept. Bench Mark
RDBM TAG ----- Road Dept. Bench Mark Tag
RR ----- Railroad
RT ----- Right
R/W ----- Right of Way
SDMH ----- Storm Drain Manhole
SMH ----- Sewer Manhole
SPK ----- Spike
ST&W ----- Spike Tin and Washer
S/O ----- South of
TP ----- Telephone Pole
USC&GS ----- U.S. Coast and Geodetic Survey
USGS ----- U.S. Geological Survey
WK ----- Walk
W/O ----- West of

NORWALK

QUAD

A

T

E

S

I

A

10218
10217
9305
9306
7772
7773
9304
9301

BLVD
GARFIELD AVE
CHERRY AVE
TESIA

9293
7768
799
10222
9290
10223
9289
10223
769
7029
9287
9286
2596
766
765
763
2597
2598
7028
478
477
960
7078
9375
9376
2616
9377
10328
10327
804
803
9292
9420
8783
8784
10325
10326
9419
7096
7097
3634
7095
7094
7109
1567
SOUTH
166
165
164
163
162
7090
7091
7092
7093
LAKESIDE
8800
7098
4961
1438
7100
7101
7102
124
8756
7103
7104
3702
3676
5045
3679
3680
7106
3681
9397
8812
3686
9385
8811

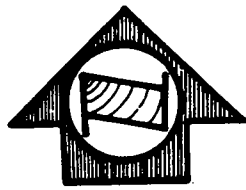
WER
QUAD
2-20-91

EL AMO BLVD
8771 9432
10061
10062
8773
8776
5057
8803
5055
5054
5053
5052
PARAMOUNT
9416
9417
7075
5006
5008
5009
10229
10230
8591
8592
7068
7067
9395
8590
RD
SAN DIEGO FRWY
7064
7063
7066
10231
8594
8595
7062
7061
10232
9393
9392
7060
6155
7059
8598
9391
10064
CHARLEMAGNE AVE
10233
8599
9390
2946
2943
2942
2941
9389
ST
9539
10234
6158
6159
9540
9541

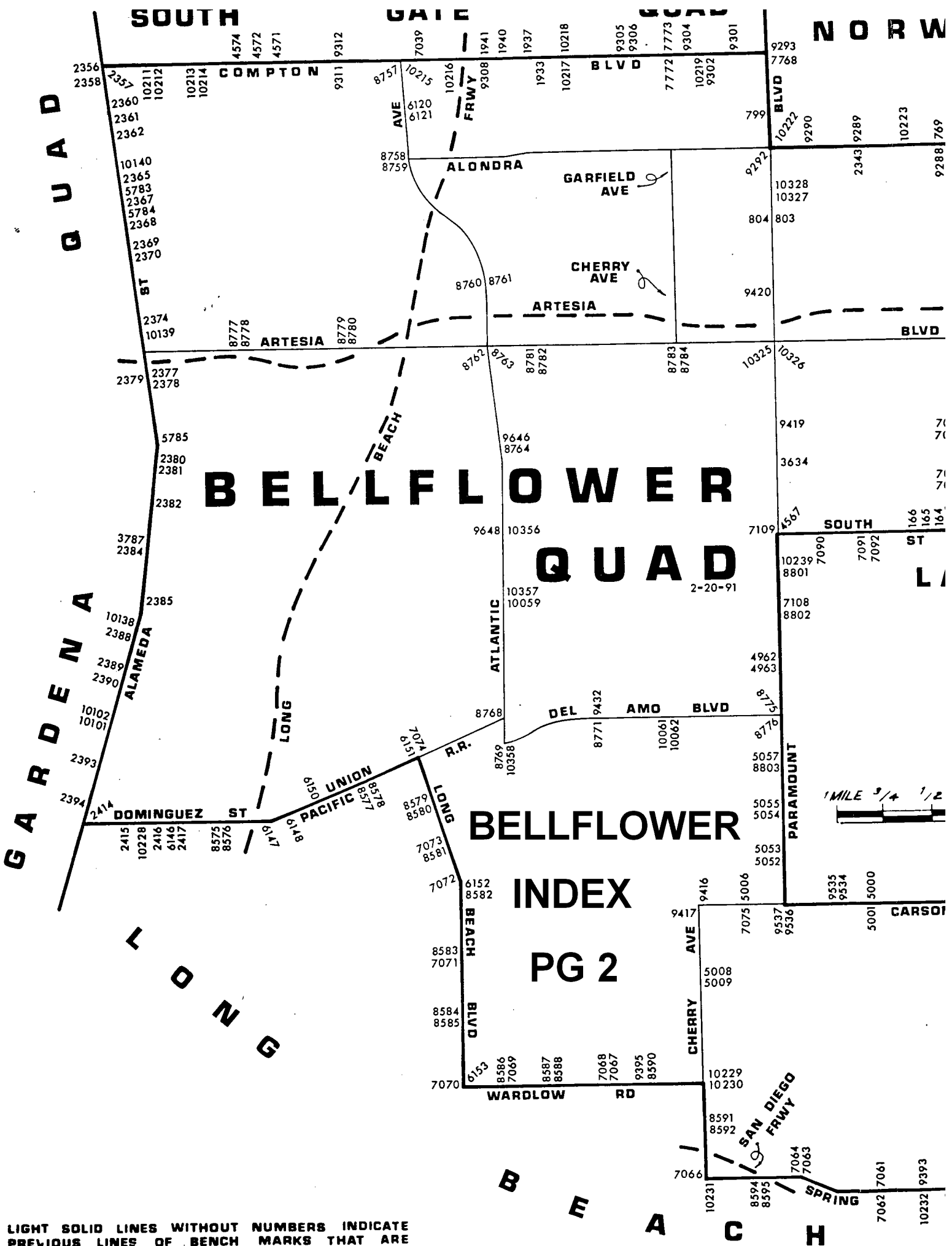
M
A
C
H

BLVD
FRWY
BELLFLOWER BLVD
ARTESIA AVE
ASHWORTH ST
ALLINGTON
WOODRUFF AVE
STUDEBAKER
SOUTH ST
VERDE
PALO

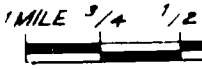
LAKESIDE
LAKEWOOD
CARSON
BELLFLOWER
INDEX
PG 1
9378
9379
8808
9381
9382
7080
9383
10238
8810
8811
5027
5026
9396
7057
7056
9387
10236
8814
9388



BELLFLOWER INDEX PG 1



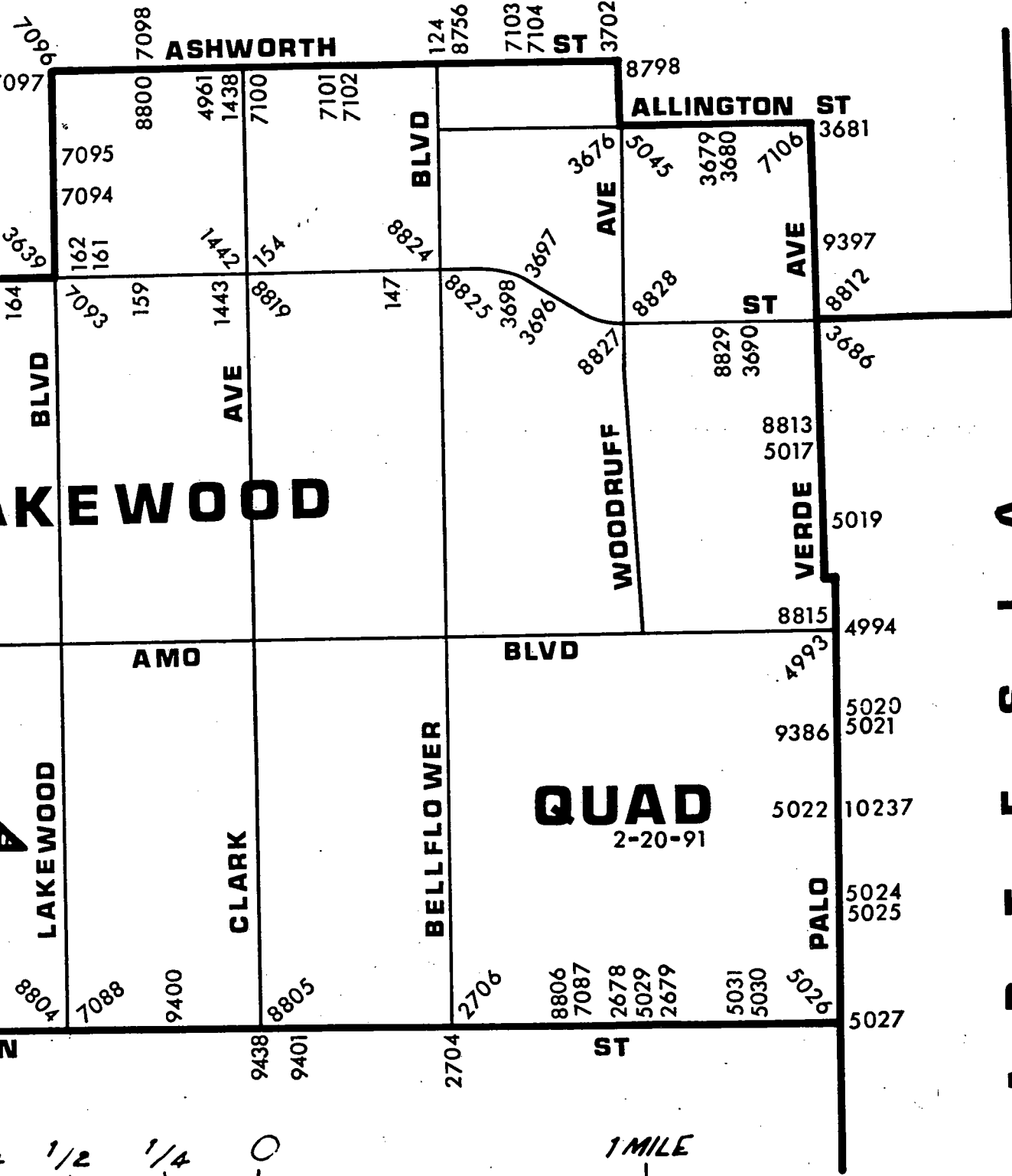
LIGHT SOLID LINES WITHOUT NUMBERS INDICATE PREVIOUS LINES OF BENCH MARKS THAT ARE NOT INCLUDED IN THE 1980 ADJUSTMENT.



Q U A D

Q U A D

A R T E S I A



SCALE

LAKWOOD

INDEX PG 1

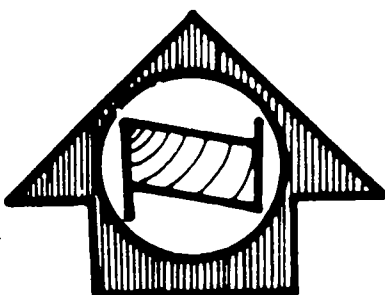
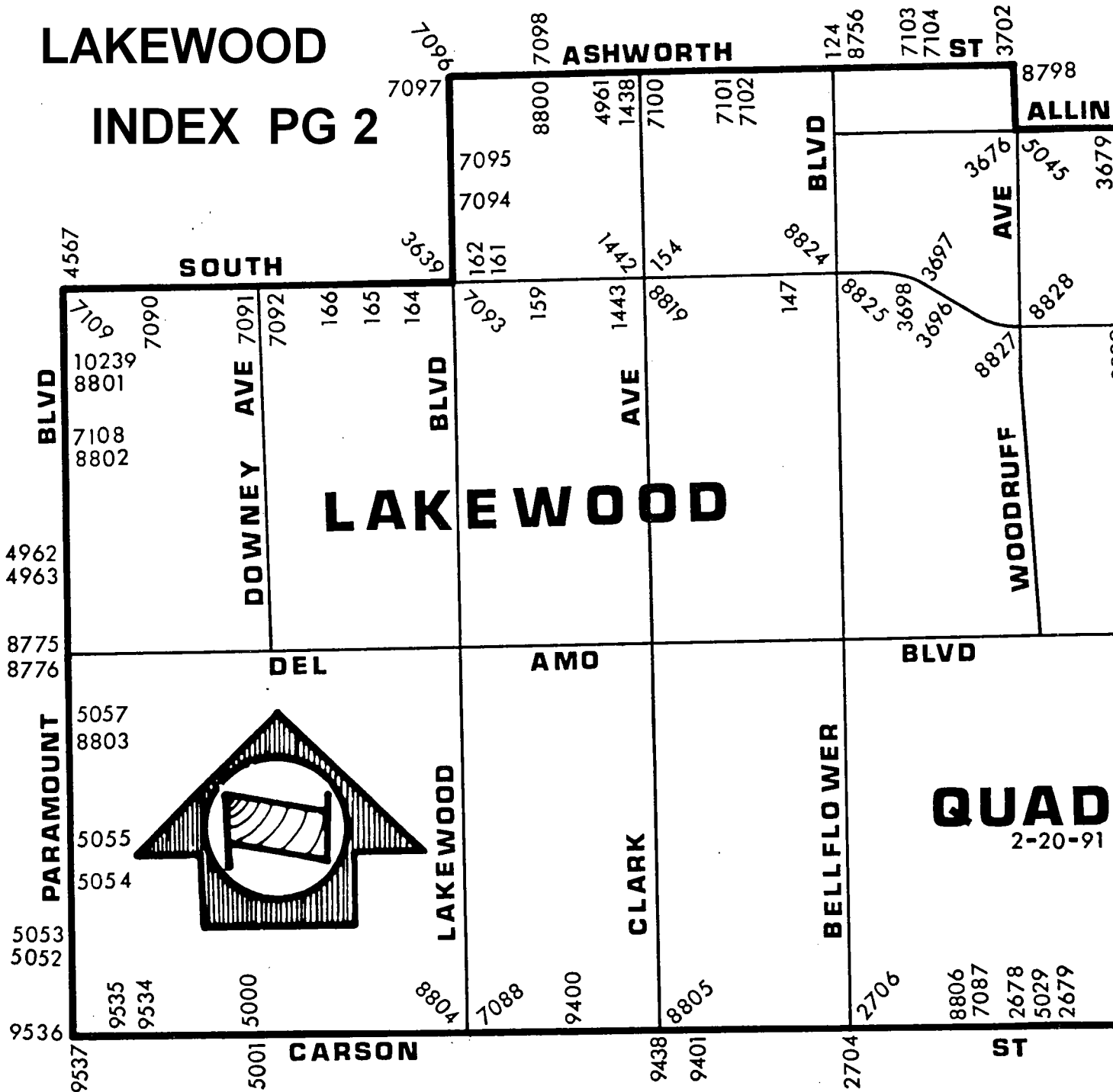
OLD LINES WITHOUT NUMBERS INDICATE
S LINES OF BENCH MARKS THAT ARE
INCLUDED IN THE 1980 ADJUSTMENT.

Q U A D

LAKWOOD

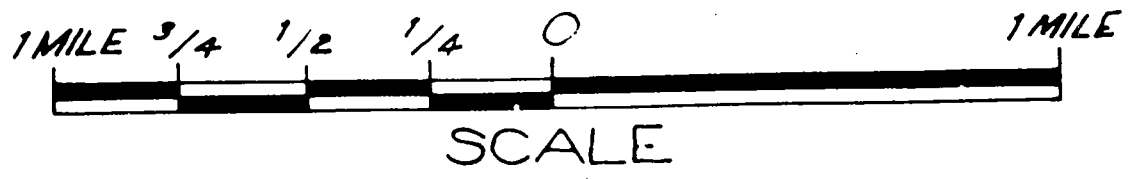
INDEX PG 2

B E L L F L O W E R



QUAD

2-20-91



LIGHT SOLID LINES WITHOUT NUMBERS INDICATE PREVIOUS LINES OF BENCH MARKS THAT ARE NOT INCLUDED IN THE 1980 ADJUSTMENT.

RIVERA

QUAD

QUAD

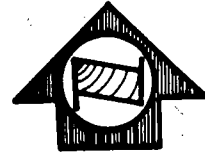
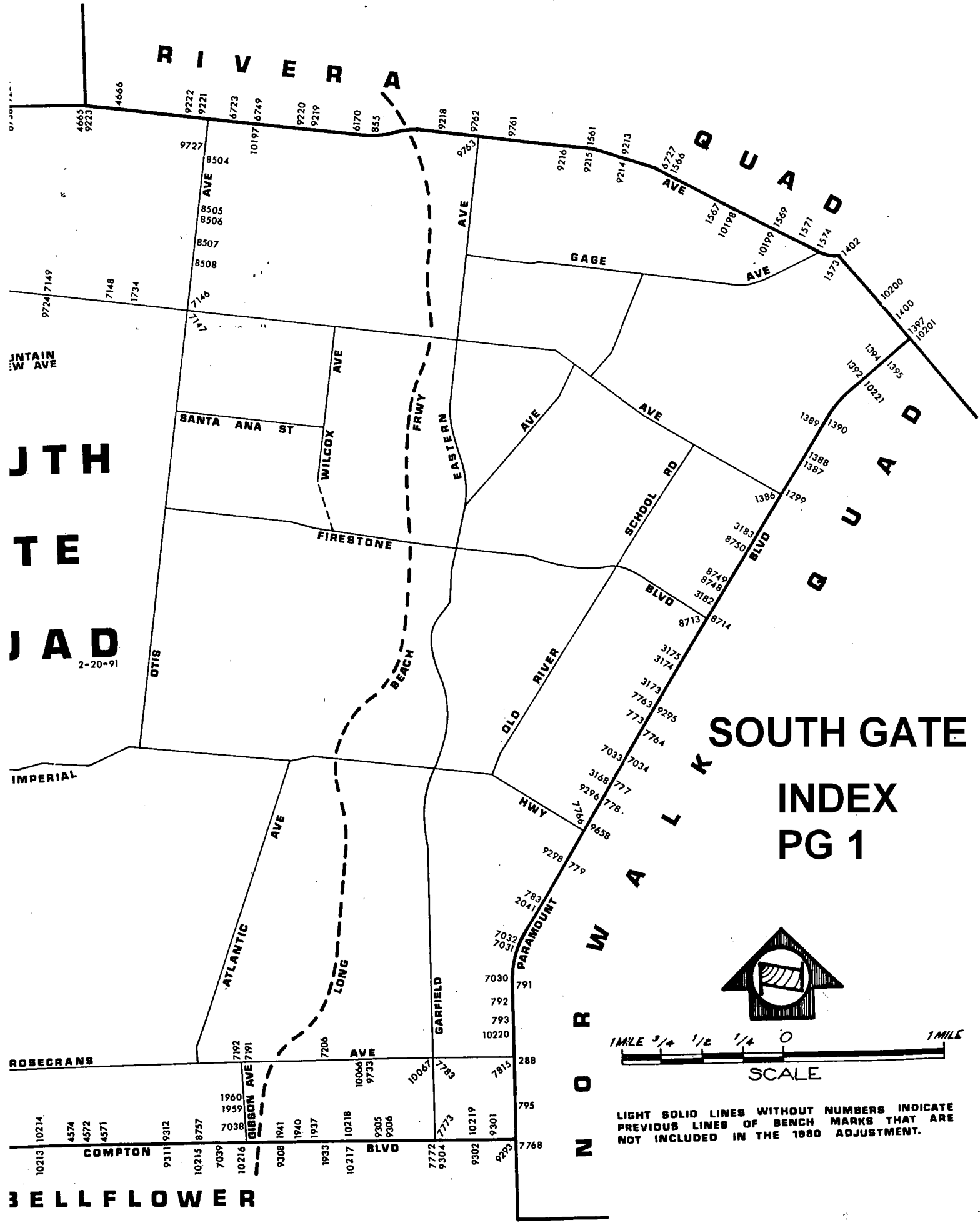
SOUTH GATE

INDEX PG 1

NORWALK

QUAD

JTH
TE
JAD
2-20-91



LIGHT SOLID LINES WITHOUT NUMBERS INDICATE PREVIOUS LINES OF BENCH MARKS THAT ARE NOT INCLUDED IN THE 1980 ADJUSTMENT.

RIVERA

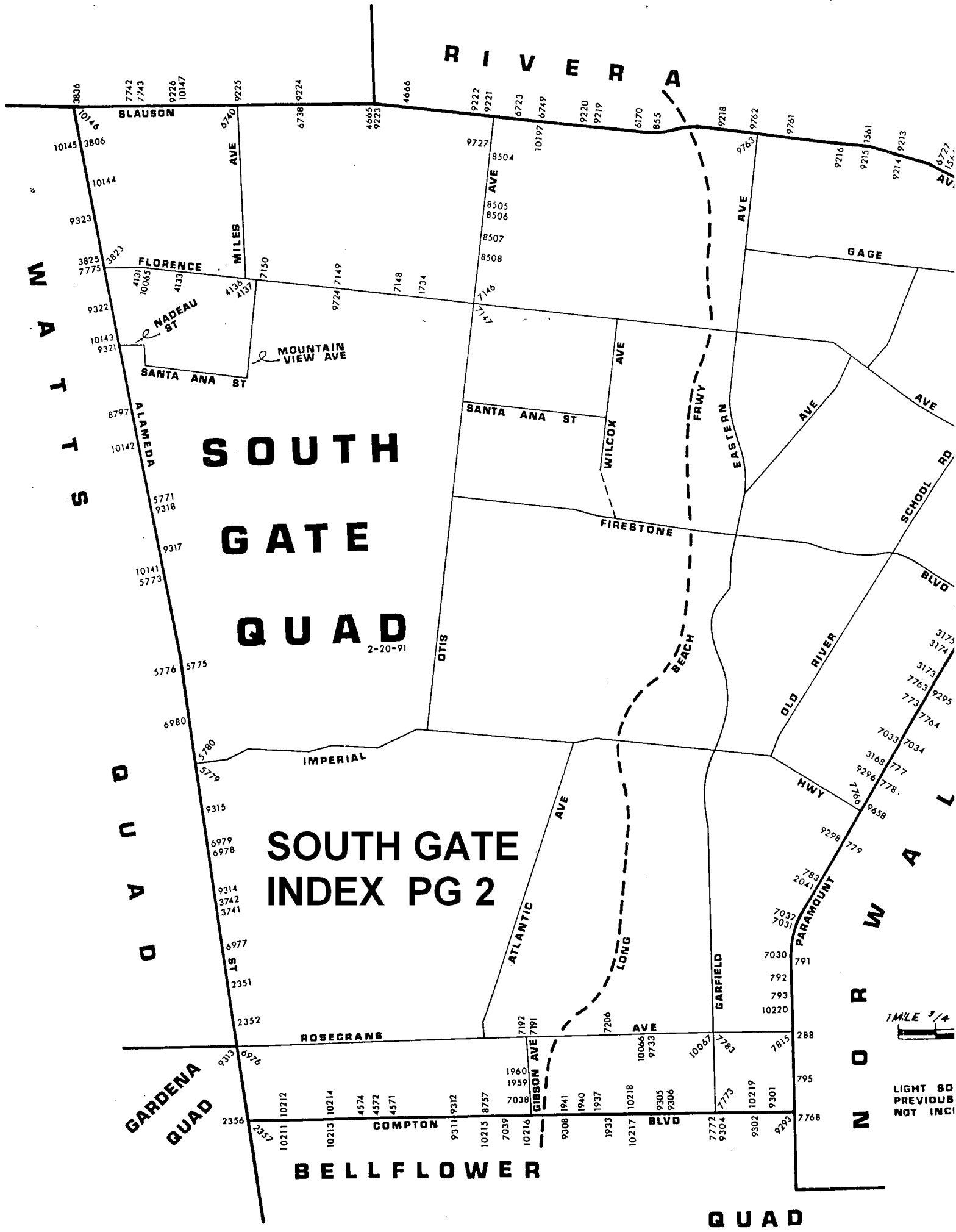
W
A
T
S

Q
U
A
D

N
O
R
W
A
L

SOUTH GATE QUAD

SOUTH GATE INDEX PG 2



1/4 MILE

LIGHT SO PREVIOUS NOT INCL

| QUAD-YEAR | ELEV | DESCRIPTION (INCLUDE QUAD AND YEAR IN DESCRIPTION) | BM NUMBER |
|--------------------|--------|--|-----------|
| BELLFLWR (1990) | 63.481 | FCBM 2FT N BCR @ NE COR BELLFLOWER BLVD & RAMONA ST 42FT N & 42FT W C/L INT MKD (74-19C) | DY 121 |
| BELLFLWR (1990) | 61.756 | L&BN 1FT N CB RET @ NW COR CEDAR AVE & BELLFLOWER BLVD 33FT N & 42FT W C/L INT | DY 122 |
| BELLFLWR (1990) | 60.177 | L&SPK 5FT N/O BCR @ NW COR ROSE ST & BELLFLOWER BLVD 40FT N & 42FT W C/L INT | DY 123 |
| BASELINE (1990) | 59.050 | L&T 1FT W CB RET @ NW COR ASHWORTH ST & BELLFLOWER BLVD 18FT N & 62FT W/O C/L INT | DY 124 |
| LAKEWOOD (1990) | 54.799 | BT SPK E CB AUTRY AVE 85FT N C/L SOUTH ST & 16FT E/O C/L AUTRY AVE MKD (BM LC 99) | DY 147 |
| LAKEWOOD (1990) | 53.414 | FC MON N CB SOUTH ST 52FT N C/L & 58 E C/L CLARK AVE MKD (BM 74-504) | DY 154 |
| LAKEWOOD (1990) | 54.111 | L&T N CB SERVICE RD 8FT W BCR @ NW COR GRAYWOOD AVE & SOUTH ST 80FT N & 48FT W C/L INT | DY 159 |
| LAKEWOOD (1990) | 54.307 | L & T 10FT W BCR @ NW COR BLACKTHORNE AVE & SOUTH ST 80FT N & 50FT W C/L INT | DY 161 |
| LAKEWOOD (1990) | 53.986 | L&T N CB SERVICE RD 5FT W BCR @ NW COR BONFAIR AVE & SOUTH ST 80FT N & 50FT W C/L INT | DY 162 |
| BASELINE (1990) | 53.294 | L&T W CB 1FT N CB RET @ NW COR OLIVA AVE & SOUTH ST (SERVICE RD) 110FT N & 20FT W/O C/L INT | DY 164 |
| BASELINE (1990) | 52.876 | L&T N CB SERVICE RD 2FT W CB RET @ NW COR CASTANA AVE & SOUTH ST 89FT N & 57FT W C/L INT | DY 165 |
| BASELINE (1990) | 52.564 | L&T N CB SERVICE RD 1FT W CB RET @ NW COR HAYTER AVE & SOUTH ST 89FT N & 56FT W C/L INT | DY 166 |
| BASELINE (1990) | 73.374 | 4.5 IN IP WITH L&T 6IN BACK WK ON SE COR PARAMOUNT BLVD & ROSECRANS AVE 244FT S C/L 50FT E C/L INT MKD (LAC 32) | DY 288 |
| BASELINE (1990) | 73.078 | CS REF MON IN WELL 14IN DN ON NE COR ALONDRA BLVD & WOODRUFF AVE 56FT N & 60FT E/O C/L INT MKD (CLEARWATER K 2A) | DY 473 |
| BASELINE (1990) | 73.716 | CSBM MON FL ON NW COR ALONDRA BLVD & WOODRUFF AVE 39FT N & 180FT W C/L INT MKD (BM 6-6A1958) | DY 474 |
| BASELINE (1990) | 74.704 | L&N IN E CB 18FT E/O C/L EUCALYPTUS AVE & 80FT S/O C/L ALONDRA BLVD (15FT W/O BCR) | DY 477 |
| BASELINE (1990) | 75.143 | L&T IN E CB 15FT E/O C/L LEAHY AVE & 80FT N/O C/L ALONDRA BLVD (27FT N/O BCR) | DY 478 |

| QUAD-YEAR | ELEV | DESCRIPTION (INCLUDE QUAD AND YEAR IN DESCRIPTION) | BM NUMBER |
|--------------------|---------|---|-----------|
| BASELINE (1990) | 75.121 | L&T IN W CB 15FT W/O C/L LEAHY AVE & 80FT N/O C/L ALONDRA BLVD (14FT N/O BCR) | DY 479 |
| BASELINE (1990) | 71.731 | L&T 2FT W CB RET NW COR RYON AVE & ALONDRA BLVD 38FT N & 32FT W C/L INT | DY 763 |
| BASELINE (1990) | 73.595 | L&BN S CB ALONDRA BLVD 6IN E CB RET @ SE COR ALONDRA BLVD & PACIFIC AVE 70FT W PERR | DY 765 |
| BASELINE (1990) | 68.544 | L & SPK 4FT E CB RET @ NE COR CLARK AVE & ALONDRA BLVD | DY 766 |
| BASELINE (1990) | 68.320 | L&T C/L INT PITTS AVE & ALONDRA BLVD | DY 769 |
| BASELINE (1990) | 108.324 | L&SPK IN WK 55FT N/O C/L COLE ST (TO THE WEST) & 50FT W/O C/L PARAMOUNT BLVD MKD (0-31) | DY 773 |
| BASELINE (1990) | 104.780 | L&T 14FT E C/L PARAMOUNT BLVD 11FT N C/L SPRINGER ST PROD IN CONC PVMT | DY 777 |
| BASELINE (1990) | 103.878 | L&T IN CONC 14FT E C/L PARAMOUNT BLVD 4FT N C/L QUILL DR PROD | DY 778 |
| BASELINE (1990) | 90.338 | L & T 1FT N BCR @ NE COR PARAMOUNT BLVD & ADOREE AVE 58FT N & 38FT E C/L INT | DY 779 |
| BASELINE (1990) | 82.506 | CS MON 16FT W & 5FT S INT PARAMOUNT BLVD & GARDENDALE ST | DY 783 |
| BASELINE (1990) | 77.706 | L & T 10FT S BCR INTO CB RET @ NE COR PARAMOUNT BLVD & CENTURY BLVD 2FT N & 41FT E C/L INT | DY 791 |
| BASELINE (1990) | 76.227 | BT SPK 1FT S BCR @ SW COR PARAMOUNT BLVD & PEARLE ST 32FT S & 38FT W C/L INT MKD (H-110) | DY 792 |
| BASELINE (1990) | 75.474 | BT SPK BCR @ SW COR PARAMOUNT BLVD & HOWE ST 30FT S & 38FT W C/L INT | DY 793 |
| BASELINE (1990) | 71.487 | L & T IN CB 38FT W C/L PARAMOUNT BLVD ON THIRD ST C/L PROD | DY 795 |
| BASELINE (1990) | 68.482 | L&T W CB PARAMOUNT BLVD 2FT N CB RET @ NW COR MADISON ST & PARAMOUNT BLVD | DY 799 |
| BELLFLWR (1990) | 65.515 | L&T E CB 5FT N BCR @ NE COR PARAMOUNT BLVD & 70TH ST 57FT N & 33FT E C/L INT | DY 803 |
| BELLFLWR (1990) | 65.202 | CITY OF LONG BEACH MON IN WELL 6IN DN @ OR NR C/L INT PARAMOUNT BLVD & 70TH ST (USE W EDGE) MKD (1961) | DY 804 |

| QUAD-YEAR | ELEV | DESCRIPTION (INCLUDE QUAD AND YEAR IN DESCRIPTION) | BM NUMBER |
|---------------------|---------|--|-----------|
| BASELINE (1990) | 157.675 | U S E D L&N W END N HDWL LA RIVER BRIDGE NO 2305 ON SLAUSON AVE 29FT N/O C/L SLAUSON AVE | DY 855 |
| BASELINE (1990) | 73.470 | L&T IN S CB ALONDRA BLVD 1FT E INTO RET 68FT W C/L WOODRUFF AVE & 38FT S/O C/L ALONDRA BLVD | DY 960 |
| BASELINE (1990) | 125.683 | RDBM TAG N CB 1FT E BCR @ NE COR PARAMOUNT BLVD & FLORENCE AVE 40FT N & 68FT E C/L INT | DY 1299 |
| BASELINE (1990) | 124.365 | CS BR CAP CONC MON IN WELL @ C/L INT PARAMOUNT BLVD & FLORENCE AVE | DY 1386 |
| BASELINE (1990) | 127.087 | L & BRAD CTR CB RET SE COR LUBEC ST & PARAMOUNT BLVD 25FT S & 52FT E C/L INT | DY 1387 |
| BASELINE (1990) | 127.305 | L & BRAD CTR CB RET NE COR LUBEC ST & PARAMOUNT BLVD 27FT N & 52FT E C/L INT | DY 1388 |
| BASELINE (1990) | 130.241 | L&BN W CB PARAMOUNT BLVD @ NLY P L HSE NO 9603 33FT W/O C/L PARAMOUNT BLVD | DY 1389 |
| BASELINE (1990) | 131.723 | L & T CONC CB @ BCR SE COR SUVA ST & PARAMOUNT BLVD 48FT S & 38FT E C/L INT MKD (BM) | DY 1390 |
| BASELINE (1990) | 134.141 | L & T IN CONC CB @ BCR @ SW COR GALLATIN RD & PARAMOUNT BLVD 53FT S & 38FT W C/L INT | DY 1392 |
| BASELINE (1990) | 138.375 | SQ HD SPK W CB OF SERVICE RD OF PARAMOUNT BLVD 12FT N C/L PROD BROOKGREEN RD | DY 1394 |
| BASELINE (1990) | 139.325 | L&BR E CB 1FT S/O BCR @ SE COR PARAMOUNT BLVD & VISTA DEL ROSA SERVICE ISLAND 40FT E & 50FT S C/L INT | DY 1395 |
| BASELINE (1990) | 141.886 | CS MON IN WELL 8IN DN ON C/L TELEGRAPH RD 20FT WLY C/L PARAMOUNT BLVD MKD (BELL K4 1941) | DY 1397 |
| BASELINE (1990) | 143.611 | RAM NAIL IN N CB TELEGRAPH RD 16FT E/O PP NO 14630Y 38FT N/O C/L TELEGRAPH RD & 110FT W/O C/L CRIDER AVE | DY 1400 |
| BASELINE (1990) | 151.584 | L&T IN N CB TELEGRAPH RD 4FT E OF CB RET @ NE COR SLAUSON AVE 40 FT N & 105FT E OF C/L INT | DY 1402 |
| BASELINE (1990) | 58.454 | L&T CTR CB RET SW COR ASHWORTH ST & CLARK AVE 28FT S & 34FT W/O C/L INT | DY 1438 |
| LAKESWOOD (1990) | 53.769 | L&T 7FT W BCR @ NW COR SOUTH ST & CLARK AVE 52FT N & 60FT W C/L INT | DY 1442 |
| LAKESWOOD (1990) | 52.817 | CS BR CAP MON IN WELL @ C/L INT SOUTH ST & CLARK AVE (USE NW COR) | DY 1443 |

| QUAD-YEAR | ELEV | DESCRIPTION (INCLUDE QUAD AND YEAR IN DESCRIPTION) | BM NUMBER |
|--------------------|---------|--|-----------|
| BELLFLWR (1990) | 65.174 | L&BR @ NW COR ARTESIA AVE & BELLFLOWER BLVD 5FT W CTR CB RET 43FT N & 43FT W C/L INT | DY 1499 |
| BASELINE (1990) | 139.872 | L&T N CB SLAUSON AVE @ WLY END OF CURVE 42FT N C/L SLAUSON AVE & 300FT E BOXFORD AVE (13FT W/O W END C B) | DY 1561 |
| BASELINE (1990) | 148.334 | L&T N CB SLAUSON AVE 2FT E CB RET @ NE COR GARFIELD AVE 38FT N & 65FT E C/L INT | DY 1566 |
| BASELINE (1990) | 152.439 | L & BN IN S CB SLAUSON AVE 3FT N PP NO 666256E 0.2MI E GARFIELD AVE 32FT E/O DR TO BLDG NO 7000 | DY 1567 |
| BASELINE (1990) | 158.040 | RD MON IN WELL W/COVER ON C/L SLAUSON AVE 25FT W C/L GREENWOOD AVE (USE SE EDGE) | DY 1569 |
| BASELINE (1990) | 152.028 | L&T IN S CB TELEGRAPH RD 5FT6IN E/O CB RET @ SE COR SLAUSON AV 40FT S & 48FT E OF C/L INT | DY 1573 |
| BASELINE (1990) | 156.901 | RD MON IN WELL C/L INT GAGE AVE & SLAUSON AVE | DY 1574 |
| SO GATE (1990) | 138.619 | L&BN IN CB 1FT W/O BCR @ SW COR FLORENCE AVE & BEAR AVE 40FT S & 31FT W/O C/L INT | DY 1734 |
| BASELINE (1990) | 68.461 | L&T E CB 15FT S CB RET @ SE COR FAULKNER AVE & COMPTON BLVD 15FT E & 54FT S/O C/L INT | DY 1933 |
| BASELINE (1990) | 66.948 | CS MON C/L SAN JOSE AVE & APPROX N P/L OF 1ST ALLEY S COMPTON 130FT S C/L INT SAN JOSE AVE & COMPTON BLVD (USE N EDGE) | DY 1937 |
| BASELINE (1990) | 67.025 | LAFC MON @ C/L INT COMPTON BLVD & SAN ANTONIO AVE MKD (L A CO FLOOD CONT) | DY 1940 |
| BASELINE (1990) | 87.971 | RDBM TAG IN EAST ABUT. @ NE COR OF COMPTON BLVD BRIDGE OVER LA RIVER 1FT N/O CB FACE 24FT N C/L | DY 1941 |
| SO GATE (1990) | 69.505 | L&SPK E CB GIBSON AVE 16FT S CB RET @ SE COR GIBSON AVE & SAN VINCENTE ST 42FT S & 20FT E/O C/L INT | DY 1959 |
| SO GATE (1990) | 69.309 | L&SPK E CB GIBSON AVE 14FT S CB RET @ SE COR GIBSON AVE & SAN MIGUEL ST 40FT S & 20FT E/O C/L INT | DY 1960 |
| BASELINE (1990) | 83.296 | L & T 6FT W BCR @ SW COR PARAMOUNT BLVD & GARDENDALE ST 35FT S & 59FT W C/L INT | DY 2041 |
| BASELINE (1990) | 66.136 | L&T CTR CB RET @ SE COR ALONDRA BLVD & DOWNEY AVE 48FT S & 47FT E C/L INT | DY 2343 |

| QUAD-YEAR | ELEV | DESCRIPTION (INCLUDE QUAD AND YEAR IN DESCRIPTION) | BM NUMBER |
|--------------------|--------|---|-----------|
| BASELINE (1990) | 72.882 | L & T 30FT E C/L ALAMEDA ST & 33FT S OF C B ON C/L ORIS ST PROD | DY 2351 |
| BASELINE (1990) | 70.627 | L&T 30FT E/O C/L ALAMEDA ST ON C/L PROD MEALY ST | DY 2352 |
| BASELINE (1990) | 68.426 | L & BN 28FT N C/L COMPTON BLVD & 60FT W C/L ALAMEDA ST (E BBL) 13FT E/O E RAIL SPRR | DY 2356 |
| BASELINE (1990) | 68.629 | L & BN 28FT S C/L COMPTON BLVD & 70FT W C/L ALAMEDA ST (E BBL) 5FT E/O E RAIL SPRR | DY 2357 |
| BASELINE (1990) | 65.228 | L&T 25FT W C/L ALAMEDA ST E BARREL ON C/L PROD LAUREL ST TO THE E | DY 2358 |
| BASELINE (1990) | 63.888 | STEEL SPK WITH (X) ON TOP CTR S BCR TO DRWY OF COMPTON STREET DEPT NO 458 S ALAMEDA ST 29FT E C/L E BARREL 180FT N MYRRH ST | DY 2360 |
| BASELINE (1990) | 64.937 | CS MON IN WELL 10IN DN 50FT E C/L SPRR 27FT W C/L ALAMEDA ST E BARREL & 18FT S C/L PROD MYRRH ST TO THE E MKD (BM 5-22A) | DY 2361 |
| BASELINE (1990) | 64.430 | L&BN W CB ALAMEDA ST E BARREL 12FT E OF 5TH TELEGRAPH POLE N/O ALONDRA BLVD 500FT S/O MYRRH ST 25FT W/O C/L | DY 2362 |
| BASELINE (1990) | 62.467 | L&T E CB ALAMEDA ST W BBL ON C/L PROD RAYMOND AVE 27FT E/O C/L ALAMEDA ST | DY 2365 |
| BASELINE (1990) | 61.865 | L&T E CB ALAMEDA ST W BBL 27FT E/O C/L ON C/L PROD TICHENOR ST | DY 2367 |
| BASELINE (1990) | 61.615 | L&T E CB ALAMEDA ST W BBL C/L PROD CALDWELL ST 26FT E/O C/L ALAMEDA ST | DY 2368 |
| BASELINE (1990) | 61.236 | L&T E CB ALAMEDA ST W BBL 27FT E/O C/L ON C/L PROD JOHNSON ST | DY 2369 |
| BASELINE (1990) | 61.012 | L&T E CB ALAMEDA ST W BBL 27FT E/O C/L ON C/L PROD BENNET ST | DY 2370 |
| BASELINE (1990) | 59.695 | STD DISC TOP OF CONC POST 3FT N OF MILE POST NO 495 SPRR & 38FT E C/L SPRR 2FT BELOW TOP OF RAIL & 0.15MI S/O GREENLEAF BLVD 113FT E/O C/L ALAMEDA ST MKD (Q 768 1945) | DY 2374 |
| BASELINE (1990) | 62.819 | L&BN E CB ALAMEDA ST @ ANGLE POINT OF WINGWALL @ NE COR BRIDGE NO 774 OVER COMPTON CREEK 22FT E C/L & 174FT N C/L CREEK & 400FT S ARTESIA BLVD | DY 2377 |

| QUAD-YEAR | ELEV | DESCRIPTION (INCLUDE QUAD AND YEAR IN DESCRIPTION) | BM NUMBER |
|--------------------|--------|--|-----------|
| BASELINE (1990) | 58.078 | FC BR CAP @ S END OF WINGWALL @ NE COR SPRR BRIDGE 90FT E C/L ALAMEDA ST & 450FT S C/L ARTESIA BLVD MKD (RBM 44-33) | DY 2378 |
| BASELINE (1990) | 62.856 | FC BR CAP 5FT S ANGLE POINT WINGWALL SW COR BRIDGE NO 774 ON ALAMEDA ST OVER COMPTON CREEK 28FT W C/L & 600FT S ARTESIA BLVD MKD (BM 44-33) | DY 2379 |
| BASELINE (1990) | 51.339 | LAFC BR CAP E CB ALAMEDA ST 22FT E/O C/L OPP OLD ENT DOMINGUEZ SEMINARY MKD (RBM 44-32) | DY 2380 |
| BASELINE (1990) | 52.744 | FC BR CAP SE COR 8X8FT CONC VALVE BOX 58FT E C/L SPRR & 125FT E/O C/L ALAMEDA ST OPP OLD ENT TO DOMINQUEZ SEMINARY MKD (BM 44-32) | DY 2381 |
| BASELINE (1990) | 50.452 | L&BN W CB ALAMEDA ST 22FT W C/L OPP NE COR 8FT CHAIN LINK FENCE AROUND SO CAL EDISON SUB-STATION PROPERTY 650FT N DOMINGUEZ JCT | DY 2382 |
| BASELINE (1990) | 46.631 | L&BN W CB ALAMEDA ST W BBL 22FT W/O C/L & 530FT S/O C/L LONG BEACH LINE PERR 37FT N/O TP NO 16767R | DY 2384 |
| BASELINE (1990) | 45.837 | L&BN E CB ALAMEDA ST W BBL 22FT E/O C/L & 1285FT S/O C/L LONG BEACH LINE PERR 0.25MI N/O LAUREL PARK RD | DY 2385 |
| BASELINE (1990) | 42.927 | STD USGS DISC IN CONC POST 3IN UP 30FT E C/L SPRR 55FT W C/L ALAMEDA ST E BARREL 0.5MI NLY DEL AMO BLVD 4FT N TP#LU MKD (P 768 1945) | DY 2388 |
| BASELINE (1990) | 41.375 | L&BN E CB ALAMEDA ST W BARREL 22FT E/O C/L 0.1MI N/O VISTA INDUSTRIA OPP BLDG NO 19722 | DY 2389 |
| BASELINE (1990) | 40.914 | CUT SPK E CB ALAMEDA ST W BARREL 22FT E C/L & 0.25MI N/O DEL AMO BLVD 105FT S/O C/L VISTA INDUSTRIA | DY 2390 |
| BASELINE (1990) | 32.683 | L&SPK E CB ALAMEDA ST W BARREL 22FT E C/L 275FT N/O C/L EL PRESIDIO ST 1400FT S DEL AMO BLVD | DY 2393 |
| BASELINE (1990) | 32.116 | L&BN E CB ALAMEDA ST W BARREL 22FT E C/L 23FT PP NO 577803R 900FT N OF DOMINGUEZ ST | DY 2394 |
| BASELINE (1990) | 31.685 | L & T NR MCR @ SE COR ALAMEDA ST & DOMINGUEZ ST 22FT S & 45FT E/O C/L INT E BAR | DY 2414 |
| BASELINE (1990) | 31.375 | L & T IN S CB 20FT S C/L DOMINGUEZ ST 1FT W/O DRWY TO HSE NO 2638 DOMINGUEZ ST 0.10MI W/O PROSPECT AVE | DY 2415 |

| QUAD-YEAR | ELEV | DESCRIPTION (INCLUDE QUAD AND YEAR IN DESCRIPTION) | BM NUMBER |
|--------------------|--------|--|-----------|
| BASELINE (1990) | 32.022 | L&T S CB DOMINGUEZ ST 25FT W DRWY HSE NO 2738 DOMINGUEZ ST (FRONT FIRE PLUG) 0.15MI W/O SANTA FE AVE | DY 2416 |
| BASELINE (1990) | 32.779 | L & S IN W CB 3FT S BCR @ SW COR DOMINGUEZ ST & SANTA FE AVE 38FT S & 40FT W C/L INT | DY 2417 |
| BASELINE (1990) | 67.343 | LACS MON 30FT N & 70FT E C/L INT ALONDRA BLVD & CLARK AVE MKD(BM 6-8 1951) | DY 2596 |
| BASELINE (1990) | 73.236 | L&T N CB 4FT W CB RET @ NW COR ALONDRA BLVD & BLAINE AVE | DY 2597 |
| BASELINE (1990) | 73.370 | L&T IN N CB 3FT E CB RET @ NE COR ALONDRA BLVD & BLAINE AVE | DY 2598 |
| BASELINE (1990) | 74.081 | L&BN S CB 1FT W CB RET @ SW COR ALONDRA BLVD & BELLFLOWER BLVD 38FT S & 46FT W C/L INT | DY 2600 |
| BASELINE (1990) | 72.970 | L&T N CB 1FT E CB RET @ NE COR ALONDRA BLVD SERVICE RD & DUMONT AVE | DY 2616 |
| BASELINE (1990) | 73.512 | L&T N CB 1FT E OF CB RET @ NE COR ALONDRA BLVD SERVICE RD & LEIBACHER AVE | DY 2617 |
| BASELINE (1990) | 44.077 | L & BN 1FT E BCR @ NE COR CARSON ST & 1ST ALLEY W WOODRUFF AVE 40FT N & 400FT W C/L INT | DY 2678 |
| BASELINE (1990) | 44.579 | L & T 2FT W BCR @ NW COR WOODRUFF AVE & CARSON ST 42FT N & 79FT W C/L INT MKD (BM) | DY 2679 |
| BASELINE (1990) | 39.799 | RDBM TAG S CB 1FT W BCR @ SW COR BELLFLOWER BLVD & CARSON ST 38FT S & 70FT W C/L INT | DY 2704 |
| BASELINE (1990) | 39.579 | L&BRAD IN CTR CB RET @ NE COR BELLFLOWER BLVD & CARSON ST 50FT N & 50FT E/O C/L INT | DY 2706 |
| BASELINE (1990) | 22.531 | L&N S CB SPRING ST (N SERVICE RD) C/L LOMINA AVE PROD 13FT S/O C/L N SERVICE RD SPRING ST | DY 2941 |
| BASELINE (1990) | 21.798 | L & N IN CTR ISL S END PARKWAY SAN ANSELINA AVE 28FT N C/L SPRING ST SERVICE RD | DY 2942 |
| BASELINE (1990) | 22.656 | L & NAIL IN SO CB SERVICE RD SPRING ST ON C/L PROD CHATWIN AVE 54FT N/O C/L SPRING ST | DY 2943 |
| BASELINE (1990) | 22.256 | L & BN IN N CB 1FT E BCR 54FT N & 81FT E C/L INT SPRING ST & BELLFLOWER BLVD | DY 2944 |
| BASELINE (1990) | 21.344 | LACS MON IN WELL 14IN DN W/ CITY OF L B COVER @ C/L INT SPRING ST & BELLFLOWER BLVD (N EDGE) | DY 2946 |

| QUAD-YEAR | ELEV | DESCRIPTION (INCLUDE QUAD AND YEAR IN DESCRIPTION) | BM NUMBER |
|--------------------|---------|---|-----------|
| BASELINE (1990) | 104.256 | L & T 18FT S C/L SPRINGER ST & 70FT W C/L PARAMOUNT BLVD 8FT W BCR @ SW COR IN CB | DY 3168 |
| BASELINE (1990) | 110.224 | L & B 1FT W BCR @ SW COR DE PALMA ST & PARAMOUNT BLVD 18FT S & 74FT W C/L INT | DY 3173 |
| BASELINE (1990) | 111.240 | L & BRAD 1FT W BCR @ NW COR CLETA ST & PARAMOUNT BLVD 18FT N & 75FT W C/L INT | DY 3174 |
| BASELINE (1990) | 112.061 | L&T 2FT W/O BCR @ SW COR BROOKMILL RD & PARA- MOUNT BLVD 18FT S & 77FT W/O C/L INT | DY 3175 |
| BASELINE (1990) | 115.722 | LACS MON IN WELL @ C/L INT 2ND ST & PARAMOUNT BLVD (USE S EDGE) | DY 3182 |
| BASELINE (1990) | 123.851 | L & T 2FT S BCR @ SW COR PARAMOUNT BLVD & FARM ST 55FT S & 38FT W C/L INT | DY 3183 |
| BELLFLWR (1990) | 52.205 | L&BN E SIDE CONC BASE S PEDESTRIAN GATE POST OF WIRE FENCE 50FT W/O C/L PARAMOUNT BLVD 6FT NE COR EDISON CO TRANSFORMER ON THE RICHFIELD OIL CO PROPERTY 5900 BLOCK OF PARAMOUNT BLVD 0.4MI S/O C/L 63RD ST | DY 3634 |
| BASELINE (1990) | 53.881 | L & BN 1FT W BCR @ NW COR LAKEWOOD BL & SOUTH ST 40FT N & 80FT W C/L INT | DY 3639 |
| BASELINE (1990) | 56.529 | L&BN S CB ALLINGTON ST 75FT W/O C/L 28FT S/O C/L WOODRUFF AVE 1FT W/O BCR | DY 3676 |
| BASELINE (1990) | 56.768 | L&BR W CB 3FT N BCR @ NW COR ALLINGTON ST & CANEHILL AVE 75FT N & 18FT W C/L INT | DY 3679 |
| BASELINE (1990) | 57.321 | RDBM TAG S CB 1FT E BCR @ SE COR ALLINGTON ST & CANEHILL AVE 30FT S & 60FT E C/L INT | DY 3680 |
| BASELINE (1990) | 55.792 | CS MON C/L INT PALO VERDE AVE & ALLINGTON ST | DY 3681 |
| BASELINE (1990) | 49.625 | CSBM MON IN WELL 88FT S/O C/L SOUTH ST 9FT E/O C/L PALO VERDE AVE MKD (BM 9-9 1951) | DY 3686 |
| LAKWOOD (1990) | 51.359 | L&BN W CB 15FT N BCR @ NW COR SOUTH ST & SNOWDEN AVE 120FT N & 18FT W C/L INT | DY 3690 |
| LAKWOOD (1990) | 54.082 | L&BN 1FT W OF BCR @ SW COR OCANA AVE & SERVICE RD SOUTH ST 80FT S & 48FT W C/L INT | DY 3696 |
| LAKWOOD (1990) | 55.199 | L&BN 1FT W BCR @ SW COR COLDBROOK AVE & SERVICE RD SOUTH ST 80FT S & 40FT W C/L INT | DY 3697 |

| QUAD-YEAR | ELEV | DESCRIPTION (INCLUDE QUAD AND YEAR IN DESCRIPTION) | BM NUMBER |
|--------------------|---------|--|-----------|
| LAKWOOD (1990) | 55.058 | L & BN 42FT S C/L SOUTH ST & 15FT E C/L PROD ADENMOOR AVE | DY 3698 |
| BASELINE (1990) | 58.008 | L&T 1FT S CB RET @ SW COR ASHWORTH ST & WOODRUFF AVE 45FT S & 40FT W/O C/L INT | DY 3702 |
| BASELINE (1990) | 79.774 | BR CAP @ S END W CONC BANNISTER @ MAIN ENT TO THE (FRANCIS WILLARD SCHOOL) 114FT E C/L ALAMEDA ST E BBL & 98FT S C/L EL SEGUNDO BLVD MKD (W 615 1941) | DY 3741 |
| BASELINE (1990) | 75.467 | CS MON IN WELL 27FT E C/L ALAMEDA ST W BBL & 3FT S C/L EL SEGUNDO BLVD | DY 3742 |
| BASELINE (1990) | 178.696 | DISC IN S WALL 2FT E SW COR BLDG 3FT UP @ NE COR RANDOLPH ST & E BBL ALAMEDA ST 8FT N/O N CB & 8FT E/O E CB | DY 3806 |
| BASELINE (1990) | 154.063 | L&BN 1FT W BCR @ NW COR W BBL ALAMEDA ST & FLORANCE AVE 30FT N & 60 FT W/O C/L INT | DY 3823 |
| BASELINE (1990) | 157.163 | CS MON SET VERTICAL IN COR BLDG 2FT UP 3FT N COR 53FT N/O C/L FLORENCE AVE 86FT E/O E CB ALAMEDA ST (E BARREL) | DY 3825 |
| BASELINE (1990) | 178.957 | CS MON C/L SLAUSON AVE 14FT W OF W RAIL SPRR 20FT E C/L ALAMEDA ST MKD (WATTS H-2A 1939) | DY 3836 |
| SO GATE (1990) | 155.408 | L & BN 2FT W BCR @ SW COR SANTA FE AVE & FLORENCE AVE 35FT S & 48FT W/O C/L INT | DY 4131 |
| SO GATE (1990) | 155.273 | L&T IN CB 35FT S/O C/L FLORENCE AVE & ON C/L PROD RUGBY AVE | DY 4133 |
| SO GATE (1990) | 151.619 | L&BN IN CB 30FT S/O C/L FLORENCE AVE 10FT W/O C/L PROD WOODRUFF AVE | DY 4136 |
| SO GATE (1990) | 150.900 | L & BN 2FT N BCR @ SW COR MOUNTAIN VIEW AVE & FLORENCE AVE 58FT S & 15FT W C/L INT | DY 4137 |
| BASELINE (1990) | 50.860 | RDBM TAG 1.5FT E BCR @ NE COR PARAMOUNT BLVD & SOUTH ST 40FT N & 75FT E C/L INT | DY 4567 |
| BASELINE (1990) | 67.366 | L & SPK 3FT E BCR @ SE COR COMPTON BLVD & BRADFIELD AVE 40FT S & 42FT E C/L INT | DY 4571 |
| BASELINE (1990) | 65.889 | CITY OF COMPTON MON IN WELL 18IN DP C/L COMPTON BLVD & C/L PROD BRADFIELD AVE N | DY 4572 |
| BASELINE (1990) | 66.108 | CITY OF COMPTON MON IN WELL 12IN DP @ C/L INT COMPTON BLVD & LONG BEACH BLVD 5FT N OF MON TO THE S | DY 4574 |

| QUAD-YEAR | ELEV | DESCRIPTION (INCLUDE QUAD AND YEAR IN DESCRIPTION) | BM NUMBER |
|--------------------|---------|--|-----------|
| BASELINE (1990) | 164.867 | L&T S CB SLAUSON AVE 192FT W & 21FT S C/L INT DOWNEY RD & SLAUSON AVE FRONT OF POWER POLE | DY 4665 |
| BASELINE (1990) | 162.162 | CS MON IN WELL 8IN DN 2FT S & 4FT W/O C/L INT SLAUSON AVE & EVERETT AVE MKD (LA CO SUR CONTROL SYS TRAVERSE STA WATTS L-2B RE4233) | DY 4666 |
| BASELINE (1990) | 57.552 | CS MON IN WELL 8IN DN ON SW COR CLARK AVE & ASHWORTH ST 38FT S & 30FT W C/L INT MKD (BM 32-3) | DY 4961 |
| BASELINE (1990) | 46.623 | RDBM TAG W CB 6FT N BCR OF ISLAND @ NW COR PARAMOUNT BLVD & HARDWICK ST 45FT N & 40FT W C/L INT | DY 4962 |
| BASELINE (1990) | 46.779 | RDBM TAG W CB 2FT S BCR OF ISLAND @ SW COR PARAMOUNT BLVD & HARDWICK ST 37FT S & 43FT W C/L INT | DY 4963 |
| BASELINE (1990) | 43.344 | CS MON IN WELL 10IN DN ON SW COR DEL AMO BLVD & & PALO VERDE AVE 23FT W & 85FT S C/L INT MKD (BM 9-10) | DY 4993 |
| BASELINE (1990) | 44.401 | L&T E CB 17FT S BCR @ SE COR DEL AMO BLVD & PALO VERDE AVE 90FT S & 30FT E C/L INT MKD (BM) | DY 4994 |
| BASELINE (1990) | 55.029 | USC&GS BR CAP E END CONC BRIDGE 1000FT W LAKEWOOD BLVD NR CTR GOLF COURSE 50FT N C/L CARSON ST MKD (C780 1946) | DY 5000 |
| BASELINE (1990) | 55.066 | SQ HD BT E END HDWL CONC BRIDGE 1000FT W LAKEWOOD BLVD NR CTR GOLF COURSE 50FT S C/L CARSON ST MKD (U) | DY 5001 |
| BELLFLWR (1990) | 67.093 | L&BRAD W CB 1FT N BCR @ NW COR CARSON ST & DEEBOYER AVE 90FT N & 18FT W C/L INT MKD (BM) | DY 5006 |
| BELLFLWR (1990) | 62.135 | RDBM TAG N CB 1FT E BCR @ NE COR CHERRY AVE & BIXBY AVE 30FT N & 88FT E SPLIT OF CBS | DY 5008 |
| BELLFLWR (1990) | 62.076 | RDBM TAG S CB 3FT E BCR @ SE COR CHERRY AVE & BIXBY AVE 30FT S & 91FT E SPLIT OF CBS | DY 5009 |
| BASELINE (1990) | 47.606 | L&T S CB 3FT W BCR @ SW COR PALO VERDE AVE & CANDLEWOOD ST 68FT W & 38FT S C/L INT MKD (BM) | DY 5017 |
| BASELINE (1990) | 46.454 | L&BR E CB 1FT N BCR @ NE COR PALO VERDE AVE & EBERLE ST 50FT N & 30FT E C/L INT MKD (BM) | DY 5019 |
| BASELINE (1990) | 38.608 | CS MON IN WELL 10IN DN @ OR NR C/L INT PALO VERDE AVE & ARBOR RD (USE S EDGE) | DY 5020 |

| QUAD-YEAR | ELEV | DESCRIPTION (INCLUDE QUAD AND YEAR IN DESCRIPTION) | BM NUMBER |
|--------------------|--------|--|-----------|
| BASELINE (1990) | 41.210 | L&BN N CB 73FT W BCR @ NW COR PALO VERDE AVE & ARBOR RD 138FT W & 18FT N C/L INT (ALONG FC R/W) CB MKD (LC 28) | DY 5021 |
| BASELINE (1990) | 36.064 | CS MON IN WELL 12IN DN @ OR NR C/L INT PALO VERDE AVE & CENTRALIA ST (USE W EDGE) | DY 5022 |
| BASELINE (1990) | 35.034 | CS MON IN WELL 12IN DN @ OR NR C/L INT PALO VERDE AVE & HARVEY WAY | DY 5024 |
| BASELINE (1990) | 36.154 | L&BN E CB 1FT S BCR @ SE COR PALO VERDE AVE & HARVEY WAY 30FT E & 57FT S C/L INT | DY 5025 |
| BASELINE (1990) | 36.432 | RDBM TAG W CB 6FT N BCR @ NW COR PALO VERDE AVE & CARSON ST 82FT N & 30FT W C/L INT | DY 5026 |
| BASELINE (1990) | 36.377 | RDBM TAG E CB 6FT N BCR @ NE COR PALO VERDE AVE & CARSON ST 82FT N & 30FT E C/L INT | DY 5027 |
| BASELINE (1990) | 44.808 | CS MON FLUSH W/WLK 2FT NW CTR CB RET @ NW COR CARSON ST & WOODRUFF AVE 57FT N & 48FT W C/L INT MKD (K9 RM NO 3) | DY 5029 |
| BASELINE (1990) | 42.041 | RDBM TAG SO CB N SER RD 54FT N & 615FT W/O INT CARSON ST & CARFAX AVE (FRONT OF HSE NO 6133) ENT TO WATER PUMP HSE | DY 5030 |
| BASELINE (1990) | 41.573 | RDBM TAG NO CB N SER RD 82FT N & 615FT W/O INT CARSON ST & CARFAX AVE (FRONT OF HSE NO 6133) ENT TO WATER PUMP HSE | DY 5031 |
| BASELINE (1990) | 56.053 | L&T E CB 1FT S BCR @ SE COR WOODRUFF AVE & ALLINGTON ST 76FT S & 40FT E C/L INT MKD (BM) | DY 5045 |
| BASELINE (1990) | 62.497 | RDBM TAG 2FT S BCR @ SW COR PARAMOUNT BLVD & WARWOOD RD (W SERVICE RD) 47FT S & 76FT W/O C/L INT | DY 5052 |
| BASELINE (1990) | 62.478 | RDBM TAG W CB 2FT N BCR @ NW COR PARAMOUNT BLVD & WARWOOD RD (W SERVICE RD) 48FT N & 76FT W/O C/L INT | DY 5053 |
| BASELINE (1990) | 60.516 | RDBM TAG W CB 2FT S BCR @ SW COR PARAMOUNT BLVD & GREENTOP ST (W SERVICE RD) 46FT S & 76FT W/O C/L INT | DY 5054 |
| BASELINE (1990) | 60.238 | RDBM TAG W CB 2FT N BCR @ NW COR PARAMOUNT BLVD & GREENTOP ST (W SERVICE RD) 46FT N & 76FT W/O C/L INT | DY 5055 |

| QUAD-YEAR | ELEV | DESCRIPTION (INCLUDE QUAD AND YEAR IN DESCRIPTION) | BM NUMBER |
|--------------------|---------|--|-----------|
| BASELINE (1990) | 54.371 | RDBM TAG W CB 2FT N BCR @ NW COR PARAMOUNT BLVD & CENTRALIA ST (W SERVICE RD) 47FT N & 76FT W/O C/L INT | DY 5057 |
| BASELINE (1990) | 119.671 | CS MON CONC FOUNDATION SW LEG TRANSMISSION LINE TOWER NO 26503 33FT E C/L E BBL ALAMEDA ST & 118 FT N C/L SOUTHERN AVE MKD (LC 769 1945) | DY 5771 |
| BASELINE (1990) | 113.584 | RD MON CONC BASE FORMER RR SIGNL 68FT E C/L W BB ALAMEDA ST & 30FT N C/L TWEEDY BLVD MKD (BM 30) | DY 5773 |
| BASELINE (1990) | 102.863 | CS MON IN CONC POST 2IN UP 1FT E OF E CB ALAMEDA ST W BBL & 199 N C/L CENTURY BLVD MKD (RE 2177-6) USE SE EDGE | DY 5775 |
| BASELINE (1990) | 101.964 | CS MON IN CONC POST FL 3FT W OF W CB ALAMEDA ST (E BARREL) 199FT N C/L CENTURY BLVD MKD (A769) USE S EDGE | DY 5776 |
| BASELINE (1990) | 91.299 | LACE HEX MON IN WELL 32FT E C/L ALAMEDA ST W BBL & 34FT S C/L IMPERIAL HWY | DY 5779 |
| BASELINE (1990) | 91.179 | L&BN IN CB 10FT S BCR @ SE COR 25FT E/O C/L ALAMEDA ST (W BARREL) & 70FT S/O C/L IMPERIAL HWY MKD (BM) | DY 5780 |
| BASELINE (1990) | 63.853 | R D MON NR N END CONC HDWL CULV 27FT E C/L MAIN TRACK SPRR 45FT W C/L ALAMEDA ST E BARREL 17FT S C/L PROD RAYMOND ST MKD (BM 19) | DY 5783 |
| BASELINE (1990) | 63.694 | USC&GS MON NR S END CULV HDWL 10FT W C/L SPRR & 70FT E C/L ALAMEDA ST W BARREL 90FT N C/L PROD CALDWELL ST MKD (T 615 1941) | DY 5784 |
| BASELINE (1990) | 54.808 | MWD MON 3FT E OF E CB ALAMEDA ST 26FT E C/L & 0.5MI S/O ARTESIA BLVD IN S END CONC CULV OPP GATE NO 18011 MKD (56Z 1933) | DY 5785 |
| BASELINE (1990) | 49.212 | USC&GS MON NEAR N END SFRR CULV HDWL NO 496.25 18FT W/O C/L SFRR TRACKS 67FT E/O C/L ALAMEDA ST & 450FT S/O C/L INT ALAMEDA ST & PERR MKD (F 52 1926) | DY 5787 |
| BELLFLWR (1990) | 64.662 | L&T E CB 2FT S BCR @ SE COR ATLANTIC AVE & MYRRH ST 27FT S & 36FT E C/L INT | DY 6120 |
| BELLFLWR (1990) | 64.653 | L&T W CB 1FT S BCR @ SW COR ATLANTIC AVE & MYRRH ST 26FT S & 36FT W C/L INT | DY 6121 |
| BASELINE (1990) | 31.546 | CS MON 10IN DN 14FT S & 72FT W C/L INT DOMINGUEZ ST & SANTA FE AVE MKD (BM 8-57 RE 63) | DY 6146 |

| QUAD-YEAR | ELEV | DESCRIPTION (INCLUDE QUAD AND YEAR IN DESCRIPTION) | BM NUMBER |
|--------------------|---------|---|-----------|
| BASELINE (1990) | 53.816 | BT SPK IN CONC ABUT OF UPRR & SFRR CROSSING OVER LONG BEACH FRWY NR DOMINGUEZ ST 33FT W/O W RAIL SPRR & 8FT N/O N RAIL UPRR | DY 6147 |
| BASELINE (1990) | 57.037 | CS BR DISK CTR S HDWL W CONC ABUT UPRR BRIDGE OVER LA RIVER 10FT E/O W END HDWL MKD (BM 8-55B 1960) | DY 6148 |
| BASELINE (1990) | 57.150 | CS BR DISK CTR N HDWL E CONC ABUT 6FT E UPRR BRIDGE OVER LA RIV @ MILE POST 17.13 MKD (BM 8-54B 1960) USE SO EDGE | DY 6150 |
| BASELINE (1990) | 43.917 | USC & GS DISK 3FT ABOVE GROUND IN E FACE OF W CONC ABUT UPRR BRIDGE OVER LONG BEACH BLVD 1FT S/O N END ABUT & 50FT W/O LONG BEACH BLVD & 60FT S/O C/L 48TH ST MKD (Z-799 1946) | DY 6151 |
| BASELINE (1990) | 102.473 | 4IN BR TABLET IN WELL 18FT N OF S CB LINE PROD SAN ANTONIO DR & 33FT E OF W CB LINE PROD LONG BEACH BLVD MKD (LA COUNTY SURVEY CONTROL SYSTEM TRAVERSE STATION CLEARWATER B-8A RE 2177) @ OR NEAR C/L INT | DY 6152 |
| BASELINE (1990) | 88.063 | 4IN BR TABLET IN WELL 40FT E OF W CB PROD LONG BEACH BLVD & 48FT S/O N CB PROD WARDLOW RD MKD (LA COUNTY SURVEY CONTROL SYSTEM TRAVERSE STATION CLEARWATER B-10 RE 2177) @ OR NEAR C/L INT TO THE E | DY 6153 |
| BASELINE (1990) | 24.178 | L B CITY MON IN WELL IN LEFT TURN LANE OF NO BBL SPRING ST @ NE COR SPRING ST & LAKEWOOD BLVD 8FT N/O N CB MEDIAN ISL 3FT W/O END ISL 72FT E/O C/L LAKEWOOD BLVD ON C/L SPRING ST MKD (CITY ENG MON-USE N EDGE) | DY 6155 |
| BASELINE (1990) | 21.603 | L&BRAD IN CHIS SQ W CB 6FT S BCR @ SW COR SPRING ST & SNOWDEN AVE 100FT S & 18FT W C/L INT | DY 6158 |
| BASELINE (1990) | 23.032 | RDBM TAG S CB 1FT E BCR @ SE COR SPRING ST & SNOWDEN AVE 45FT S & 48FT E C/L INT | DY 6159 |
| BASELINE (1990) | 139.471 | MON IN WELL 12IN DN 57FT N/O & 41FT E/O C/L INT OF SLAUSON AVE & ALAMO AVE MKD (BM 4-21 1951) | DY 6170 |
| BASELINE (1990) | 150.751 | CS MON IN WELL 10IN DN 41FT NLY S CB SLAUSON AVE & 7FT WLY E CB FLORA AVE MKD (BELL 2-A 1938) | DY 6723 |
| BASELINE (1990) | 148.091 | L&BN IN CB @ NW COR SLAUSON AVE & GARFIELD AVE 66FT N & 38FT W/O C/L INT (1FT N/O BCR) | DY 6727 |

| QUAD-YEAR | ELEV | DESCRIPTION (INCLUDE QUAD AND YEAR IN DESCRIPTION) | BM NUMBER |
|--------------------|---------|--|-----------|
| BASELINE (1990) | 165.222 | CS MON 15IN DN ON C/L BOYLE AVE (STATE ST) 17FT S C/L SLAUSON AVE MKD (WATTS K-2A RE 4233) | DY 6738 |
| BASELINE (1990) | 173.279 | CS MON 8IN DN ON C/L MILES AVE (SOTO ST) 14FT S C/L SLAUSON AVE MKD (WATTS J-2E 1938) | DY 6740 |
| BASELINE (1990) | 149.217 | L&BN W CB @ NW COR ATLANTIC BLVD & SLAUSON AVE 35FT W & 97FT N C/L INT | DY 6749 |
| BASELINE (1990) | 69.837 | BT SPK 9FT S BCR @ SE COR 73FT S & 24FT E C/L IN ROSECRANS AVE & ALAMEDA ST (E BBL) | DY 6976 |
| BASELINE (1990) | 73.460 | CS MON FL IN C B ON NE COR ALAMEDA ST (E BARREL) & EUCLID AVE 45FT N & 27FT E C/L INT MKD (BM 5-19A 1964) | DY 6977 |
| BASELINE (1990) | 82.002 | L&BN E CB 1FT S BCR @ SE COR ALAMEDA ST E BBL & DIXON AV 40FT S & 20FT E APPROX C/L INT MKD (BM) | DY 6978 |
| BASELINE (1990) | 82.498 | RDBM TAG IN CONC APRON ON SE COR ALAMEDA ST E BB & DIXON AVE 15FT S & 50FT E APPROX C/L INT MKD (BM) | DY 6979 |
| BASELINE (1990) | 95.685 | L&BN W CB 1FT N BCR @ NW COR ALAMEDA ST W BBL & SANTA ANA BLVD 30FT W & 105FT N APPROX C/L INT | DY 6980 |
| BASELINE (1990) | 72.690 | CS MON IN WELL 10IN DN @ NW COR ALONDRA BLVD & BELLFLOWER BLVD 33FT N & 73FT W/O C/L INT MKD (BM 6-7 1951) | DY 7028 |
| BASELINE (1990) | 68.987 | CS MON FL @ SE COR ALONDRA BLVD & LAKEWOOD BLVD 42FT S & 187FT E C/L INT MKD (BM 6-9A 1958) | DY 7029 |
| BASELINE (1990) | 77.827 | CS MON FL IN C B @ NW COR PARAMOUNT BLVD & CEN- TURY BLVD 90FT N & 39FT W C/L INT MKD (BM 7-2A 1961) | DY 7030 |
| BASELINE (1990) | 80.505 | CS MON FL IN C B ON NW COR PARAMOUNT BLVD & HARDING AVE 40FT N & 41FT W C/L INT MKD (BM 7-3A 1961) | DY 7031 |
| BASELINE (1990) | 79.796 | CS MON 10IN DN ON NW COR HARDING AVE & PARAMOUNT BLVD 95FT N & 44FT W C/L INT MKD (BELL E 11A 1960) USE E EDGE | DY 7032 |
| BASELINE (1990) | 105.539 | CS REF MON IN WELL 40FT W/O C/L PARAMOUNT BLVD & 42FT S C/L PROD ALAMEDA ST MKD (BELL G 9 RM-1) | DY 7033 |
| BASELINE (1990) | 105.570 | CS REF MON IN WELL 40FT W/O C/L PARAMOUNT BLVD & 38FT N/O C/L PROD ALAMEDA ST MKD (BELL G 9 RM2) | DY 7034 |

| QUAD-YEAR | ELEV | DESCRIPTION (INCLUDE QUAD AND YEAR IN DESCRIPTION) | BM NUMBER |
|--------------------|---------|---|-----------|
| SO GATE (1980) | 67.135 | CS MON IN WELL 12IN DN @ C/L INT GIBSON AVE & SAN LUIS ST MKD (CO SUR MON RE 329) USE E EDGE | CY 7038 |
| BASELINE (1990) | 65.887 | CS MON IN WELL 12IN DN @ C/L INT SAN LUIS ST & LIME AVE MKD (CO SUR MON RE 329) | DY 7039 |
| BASELINE (1990) | 30.429 | L&BN 1FT S BCR @ SE COR CONANT ST & PALO VERDE AVE 30FT E & 55FT S C/L INT | DY 7056 |
| BASELINE (1990) | 30.473 | L&T 1FT E BCR @ NE COR CONANT ST & PALO VERDE AVE 65FT E & 20FT N C/L INT | DY 7057 |
| BASELINE (1990) | 22.976 | CS MON IN HAND HOLE @ C/L INT SPRING ST & CLARK AVE (USE W EDGE) | DY 7059 |
| BASELINE (1990) | 23.153 | L B CITY MON IN WELL IN LEFT TURN LANE @ NW COR LAKEWOOD BLVD & SPRING ST 8FT W/O W CB MEDIAN ISL 56FT N/O S END ISL 113FT N/O SPRING ST ON C/L LAKEWOOD BLVD (USE W EDGE) | DY 7060 |
| BASELINE (1990) | 35.110 | L B CITY MON FL IN CB @ NW COR SPRING ST & REDONDO AVE 40FT N & 45FT W/O C/L INT 3FT W/O BCR MKD (RE 3111-BM-8-40B C L B 1963) | DY 7061 |
| BASELINE (1990) | 35.103 | L&BR IN CHIS SQ TOP OF CB @ SW COR SPRING ST & REDONDO AVE 41FT S & 55FT W C/L INT | DY 7062 |
| BASELINE (1990) | 46.777 | LB CITY MON 14IN DN @ NELY COR SPRING ST & TEMPLE AVE 40FT NLY & 35FT ELY C/L INT MKD (541) | DY 7063 |
| BASELINE (1990) | 47.879 | L&N N CB SPRING ST 37FT W OF BCR @ NW COR SPRING ST & TEMPLE AVE 80FT W & 40FT N C/L INT | DY 7064 |
| BASELINE (1990) | 75.384 | L&BN E CB 1FT S BCR @ NE COR CHERRY AVE & SPRING ST 72FT N & 50FT E C/L INT MKD (BM) | DY 7066 |
| BASELINE (1990) | 69.484 | L B CITY MON IN WELL 10IN DN IN WK @ NE COR WARDLOW RD & ORANGE AVE 33FT E & 51FT N/O C/L INT MKD (BM NO 87) | DY 7067 |
| BASELINE (1990) | 68.926 | LB CITY MON 21IN DN @ C/L INT ORANGE AVE & WARDLOW RD MKD (BM-USE W EDGE) | DY 7068 |
| BASELINE (1990) | 87.125 | C L B MON IN WELL @ C/L INT WARDLOW RD & ATLANTIC AVE(S MON OF 2 MON) USE S EDGE @ ARROW | DY 7069 |
| BASELINE (1990) | 88.178 | RAMSET W CB LONG BEACH BLVD 35FT N BCR 30FT W & 120FT N C/L INT WARDLOW RD & LONG BEACH BLVD | DY 7070 |
| BASELINE (1990) | 110.381 | CS TRI MON 34FT W OF E CB LONG BEACH BLVD & 216FT S C/L INT ROOSEVELT RD & LONG BEACH BLVD MKD (B-9-RE 2177-2) | DY 7071 |

| QUAD-YEAR | ELEV | DESCRIPTION (INCLUDE QUAD AND YEAR IN DESCRIPTION) | BM NUMBER |
|--------------------|--------|--|-----------|
| BASELINE (1990) | 97.596 | USC&GS MON FL 2FT W/O W CB LONG BEACH BLVD & 2FT N/O LIGHT POST #409 20FT S & 36FT W C/L INT LONG BEACH BLVD & COUNTRY CLUB LN (SO ENT) MKD (A-780 1946) | DY 7072 |
| BASELINE (1990) | 92.220 | CS TRI MON 10IN DN 200FT N C/L INT 44TH ST & LONG BEACH BLVD 34FT W OF E CB MKD (CLEARWATER (B-8 RE2177) NEAR C/L LONG BEACH BLVD | DY 7073 |
| BASELINE (1990) | 40.121 | CS TRI MON IN WELL 2FT E/O C/L INT ARBOR ST TO THE W & LONG BEACH BLVD MKD (CLEARWATER A-7 RE 2177) | DY 7074 |
| BELLFLWR (1990) | 67.414 | L&BN S CB CARSON ST 150FT E C/L UPRR R/W & 42FT S C/L CARSON ST 6FT E DR TO BOWLING ALLEY 44FT W/O C/L PROD DEEBOYER AVE | DY 7075 |
| BASELINE (1990) | 72.141 | CS BR CAP 10IN DN 74FT W C/L MC NAB AVE & 5FT NLY OF N CB HAYFORD ST MKD (BM 9-1A RE 5869 1961 | DY 7078 |
| BASELINE (1990) | 61.543 | L&BN 2FT E BCR @ NE COR ARTESIA BLVD & STUDE-BAKER RD 81FT E & 42FT N C/L INT | DY 7080 |
| BASELINE (1990) | 61.056 | L&BN 5FT N BCR @ SW COR ARTESIA BLVD & STUDE-BAKER RD 43FT W & 72FT S C/L INT | DY 7081 |
| BASELINE (1990) | 42.747 | L&BN 1FT E/O BCR @ NE COR CARSON ST & SAN ANSELINE AVE 54FT E & 40FT N/O C/L INT MKD (BM) | DY 7087 |
| BASELINE (1990) | 44.064 | CS MON FL IN WK 45FT E BCR @ NE COR LAKEWOOD BLVD & CARSON ST 40FT N & 108FT E C/L INT MKD (G 9 A RM NO 6 RE 63) | DY 7088 |
| BASELINE (1990) | 49.166 | L&T S CB 24FT W/O C/L PROD OBISPO AVE & 40FT S C/L SOUTH ST | DY 7090 |
| BASELINE (1990) | 50.076 | RDBM TAG S CB 38FT W BCR @ SW COR SOUTH ST & DOWNEY AVE 40FT S & 97FT W C/L INT | DY 7091 |
| BASELINE (1990) | 49.329 | L&T E CB 50FT S BCR @ SE COR SOUTH ST & DOWNEY AVE 117FT S & 31FT E C/L INT | DY 7092 |
| BASELINE (1990) | 53.163 | RDBM TAG W CB 3FT S BCR @ SW COR LAKEWOOD BLVD & SOUTH ST 80FT S & 45FT W C/L INT | DY 7093 |
| BASELINE (1990) | 55.019 | L&BN W CB SERVICE RD 1FT S BCR @ SW COR HEDDA ST & LAKEWOOD BLVD 47FT S & 89FT W C/L INT MKD (BM) | DY 7094 |
| BASELINE (1990) | 55.109 | L&BRAD W CB SERVICE RD 1FT N BCR @ NW COR LAKEWOOD BLVD & HEDDA ST 47FT N & 89FT W C/L INT | DY 7095 |

| QUAD-YEAR | ELEV | DESCRIPTION (INCLUDE QUAD AND YEAR IN DESCRIPTION) | BM NUMBER |
|--------------------|---------|--|-----------|
| BASELINE (1990) | 56.384 | L&BRAD W CB SERVICE RD 5FT N BCR @ SW COR LAKE- WOOD BLVD & ASHWORTH ST 40FT S & 90FT W C/L INT | DY 7096 |
| BASELINE (1990) | 56.004 | FC BRS CAP FLUSH E CB SE COR LAKEWOOD BLVD & ASHWORTH ST 23FT S & 57FT E C/L INT MKD (FC BM 74-230 1946) | DY 7097 |
| BASELINE (1990) | 57.379 | L&T N CB 17 W C/L PROD GRAYWOOD AVE 18FT N C/L ASHWORTH ST | DY 7098 |
| BASELINE (1990) | 58.434 | FC BRS DISC E CB 5FT N BCR @ NE COR ASHWORTH ST & CLARK AVE 47FT N & 28FT E C/L INT MKD (FCBM 120-20D) | DY 7100 |
| BASELINE (1990) | 58.030 | L&BR N CB 17FT W/O C/L PROD LORELEI AVE 17FT N/O C/L ASHWORTH ST | DY 7101 |
| BASELINE (1990) | 58.002 | L & BN 1FT E BCR @ SE COR LORELEI AVE & ASHWORTH ST 17FT S & 42FT E C/L INT MKD (BM) | DY 7102 |
| BASELINE (1990) | 58.133 | L&T N CB C/L PROD DUNROBIN AVE 20FT N C/L ASH- WORTH ST | DY 7103 |
| BASELINE (1990) | 58.147 | L&BN S CB 1 FT E BCR @ SE COR DUNROBIN AVE & ASHWORTH ST 41FT E & 20FT S C/L INT MKD (BM) | DY 7104 |
| BASELINE (1990) | 56.287 | L&T W CB 3FT S BCR @ SW COR PALO VERDE AVE & ALLINGTON AVE 70FT S & 25FT W C/L INT | DY 7106 |
| BASELINE (1990) | 48.544 | L&T E CB 8FT N BCR @ NE COR PARAMOUNT BLVD & CANDLEWOOD ST 71FT N & 40FT E C/L INT | DY 7108 |
| BASELINE (1990) | 50.626 | RDBM TAG E CB 1FT S BCR @ SE COR PARAMOUNT BLVD & SOUTH ST 76FT S & 40FT E C/L INT | DY 7109 |
| SO GATE (1990) | 136.268 | L&BRAD 2FT S/O BCR @ NE COR FLORENCE AVE & OTIS AVE 50FT N & 20FT E/O C/L INT | DY 7146 |
| SO GATE (1990) | 137.213 | L&BRAD 7FT S/O BCR @ SE COR FLORENCE AVE & OTIS AVE 55FT S & 20FT E/O C/L INT | DY 7147 |
| SO GATE (1990) | 141.030 | L&BN N CB FLORENCE AVE 1FT E C B 4FT W BCR @ NW COR CALIFORNIA AVE (W OF RR TRACKS) & FLORENCE AVE 40FT N & 63FT W C/L INT | DY 7148 |
| SO GATE (1990) | 143.279 | SPK&L 37FT W BCR @ NW COR FLORENCE AVE & STATE ST 35FT N & 80FT W C/L INT | DY 7149 |
| SO GATE (1990) | 151.486 | CE TAG IN E CB 0.5FT N/O BCR @ NE COR MOUNTAIN VIEW & FLORENCE AVE 25FT E/O & 65FT N/O C/L INT | DY 7150 |

| QUAD-YEAR | ELEV | DESCRIPTION (INCLUDE QUAD AND YEAR IN DESCRIPTION) | BM NUMBER |
|--------------------|---------|---|-----------|
| SO GATE (1990) | 71.140 | L&T E CB GIBSON AVE @ SE COR GIBSON AVE & ROSECRANS AVE 4FT S BCR IN DEP CB 20FT E & 72FT S C/L INT | DY 7191 |
| SO GATE (1990) | 71.506 | SQ BR CAP IN CONC 4FT S BCR @ NW COR ROSECRANS AVE & GIBSON AVE 22FT W & 60FT N/O C/L INT 1FT BACK FROM FACE OF CB MKD (BM IAR 219) | DY 7192 |
| SO GATE (1990) | 92.593 | PK IN N WK OF BR ON ROSECRANS AVE OVER LA RIVER @ E END 1FT N CB FACE 45FT N C/L & 0.2MI W ORANGE AVE | DY 7206 |
| BELLFLWR (1990) | 69.902 | L&T E CB 8FT S BCR @ SE COR BELLFLOWER BLVD & FLOWER ST 60FT S & 30FT E C/L INT | DY 7281 |
| BASELINE (1990) | 178.148 | RDBM TAG 38FT S BCR 104FT S & 36FT W C/L INT SLAUSON AVE & SANTA FE AVE | DY 7742 |
| BASELINE (1990) | 177.878 | RDBM TAG 44FT S BCR 104FT S & 36FT E C/L INT SLAUSON AVE & SANTA FE AVE | DY 7743 |
| BASELINE (1990) | 108.752 | CS REF MON IN WELL 8IN DN @ SW COR PARAMOUNT BLVD & STEWART & GRAY RD 50FT S & 50FT W/O C/L INT 1FT BK OF WK MKD (RM 1-1960) | DY 7763 |
| BASELINE (1990) | 108.030 | RDBM TAG 1FT S BCR @ SW COR PARAMOUNT BLVD & BRUNACHE ST 17FT S/O & 38FT W/O C/L INT | DY 7764 |
| BASELINE (1990) | 97.329 | CS REF MON IN WELL 8IN DN @ SW COR PARAMOUNT BLVD & IMPERIAL HWY 46FT S & 55FT W C/L INT MKD(RM-4 BELL F 10A 1960) | DY 7766 |
| BASELINE (1990) | 72.889 | RDBM TAG 8FT N BCR INTO CB RET @ SW COR PARAMOUNT BLVD & COMPTON BLVD 59FT S & 40FT W C/L INT | DY 7768 |
| BASELINE (1990) | 69.186 | RDBM TAG 1FT E BCR @ SE COR COMPTON BLVD & GARFIELD AVE 32FT S & 76FT E C/L INT | DY 7772 |
| BASELINE (1990) | 69.092 | RDBM TAG 2FT W BCR @ NW COR COMPTON BLVD & GARFIELD AVE 30FT N & 78FT W C/L INT | DY 7773 |
| BASELINE (1990) | 154.641 | BRASS MON FL ON C/L FLORENCE AVE & 4FT E C/L E BARREL ALAMEDA ST MKD (CE MON-USE NE COR) | DY 7775 |
| SO GATE (1990) | 72.408 | RDBM TAG IN C B @ SW COR GARFIELD AVE & ROSECRANS AVE 4FT S & 100FT W C/L INT | DY 7783 |
| BASELINE (1990) | 75.542 | L & T 40FT S BCR @ SW COR PARAMOUNT BLVD & ROSECRANS AVE 120FT S & 35FT W C/L INT | DY 7815 |

| QUAD-YEAR | ELEV | DESCRIPTION (INCLUDE QUAD AND YEAR IN DESCRIPTION) | BM NUMBER |
|--------------------|---------|---|-----------|
| SO GATE (1990) | 154.564 | RDBM TAG 1FT S BCR @ SW COR OTIS AVE & 61ST ST 25FT S & 15FT W C/L INT | DY 8504 |
| SO GATE (1990) | 144.898 | RDBM TAG 1FT E BCR @ SE COR OTIS AVE & GAGE AVE 30FT S & 34FT E C/L INT | DY 8505 |
| SO GATE (1990) | 144.820 | RDBM TAG 3FT S BCR @ SW COR GAGE AVE & OTIS AVE 43FT S & 18FT W C/L INT | DY 8506 |
| SO GATE (1990) | 142.130 | RDBM TAG 1.5FT N BCR @ NW COR OTIS AVE & BELL AVE 32FT N & 18FT W C/L INT | DY 8507 |
| SO GATE (1990) | 141.350 | L&BRAD 3FT W/O BCR @ SW COR BELL AVE & OTIS AVE 18FT S & 32FT W C/L INT | DY 8508 |
| BASELINE (1990) | 33.800 | RDBM TAG IN N CB 12FT W/O END CB & 19FT W/O SPRR TRKS 32FT N & 0.25 MI E/O C/L INT DOMINGUEZ ST & SANTA FE AVE | DY 8575 |
| BASELINE (1990) | 34.128 | L & T IN N EDGE CONC BASE RR SIGNAL 18FT S & 0.25 MI E/O C/L INT DOMINGUEZ ST & SANTA FE AVE 13FT W/O SPRR TRKS | DY 8576 |
| BASELINE (1990) | 36.451 | L & BR IN W CB 40FT WLY & 3FT SLY APPROX C/L INT 47TH ST & PACIFIC AVE | DY 8577 |
| BASELINE (1990) | 36.536 | L & T IN SE COR LIGHT POST BASE #A-11 19FT N & 17FT E APPROX C/L INT 47TH ST & PACIFIC AVE | DY 8578 |
| BASELINE (1990) | 53.232 | L & T IN E CB 26FT N & 35FT E/O C/L INT LONG BEACH BLVD & 46TH ST | DY 8579 |
| BASELINE (1990) | 54.850 | L & BR IN W CB SER RD ON C/L PROD 46TH ST & 57FT E/O C/L INT @ LONG BEACH BLVD | DY 8580 |
| BASELINE (1990) | 94.409 | L&RCE TAG #29861 NEAR CTR CB RET @ NE COR LONG BEACH BLVD & 44TH ST 27FT N & 27FT E/O C/L INT OF SERVICE RD | DY 8581 |
| BASELINE (1990) | 102.930 | RAMSET IN CHIS SQ IN W CB 3FT S BCR @ SW COR LONG BEACH BLVD & SAN ANTONIO DR 37FT WLY & 90FT SLY C/L INT | DY 8582 |
| BASELINE (1990) | 110.301 | RAMSET IN W CB 5FT S BCR @ SW COR LONG BEACH BLVD & ROOSEVELT RD 45FT S & 39FT W C/L INT | DY 8583 |
| BASELINE (1990) | 95.553 | RDBM TAG IN W CB 5FT S DRWY TO BLDG #3711 35FT W & 53FT N APPROX C/L INT LONG BEACH BLVD & 37TH ST | DY 8584 |
| BASELINE (1990) | 93.513 | L & SQ HD SCREW IN E CB 7FT S BCR @ SE COR LONG BEACH BLVD & 37TH ST 35FT E & 41FT S/O C/L INT | DY 8585 |

| QUAD-YEAR | ELEV | DESCRIPTION (INCLUDE QUAD AND YEAR IN DESCRIPTION) | BM NUMBER |
|--------------------|---------|--|-----------|
| BASELINE (1990) | 88.531 | L & BR NR CTR CB RET @ SW COR WARDLOW RD & ATLANTIC AVE 34FT S & 34FT W/O C/L INT | DY 8586 |
| BASELINE (1990) | 80.536 | RDBM TAG IN S CB 4FT W/O BCR @ SW COR WARDLOW RD & CALIFORNIA AVE 28FT S & 40FT W C/L INT | DY 8587 |
| BASELINE (1990) | 79.615 | RDBM TAG IN E CB 6FT N ECR @ NE COR WARDLOW RD & CALIFORNIA AVE 47FT N & 16FT E/O C/L INT | DY 8588 |
| BASELINE (1990) | 63.547 | RDBM TAG IN N CB 30FT E/O BCR @ NE COR WARDLOW RD & WALNUT AVE 28FT N & 79FT E/O C/L INT | DY 8590 |
| BASELINE (1990) | 54.562 | L & BR IN W CB 40FT W & 30FT N C/L INT @ CHERRY AVE & 32ND ST | DY 8591 |
| BASELINE (1990) | 53.996 | CITY OF L B MON IN WELL 7IN DN ON C/L CHERRY AVE 30FT N C/L 32ND ST | DY 8592 |
| BASELINE (1990) | 58.180 | L & BR IN E END CB 2FT W/O BCR @ SW COR SPRING ST & JUNIPERO AVE 46FT S & 61FT W/O C/L INT | DY 8594 |
| BASELINE (1990) | 57.208 | L & BR IN S CB 1FT E/O BCR @ SE COR SPRING ST & JUNIPERO AVE 46FT S & 62FT E/O C/L INT | DY 8595 |
| BASELINE (1990) | 24.792 | L & BR IN S CB 7FT W/O BCR @ SW COR SPRING ST & CLARK AVE E EDGE CB 43FT S & 77FT W C/L INT | DY 8598 |
| BASELINE (1990) | 23.851 | L & BR IN N CB 7FT W/O BCR @ NW COR SPRING ST & RUTGERS AVE 42FT N & 43FT W/O C/L INT | DY 8599 |
| BASELINE (1990) | 116.452 | CS BM MON FL IN C B @ NW COR FIRESTONE BLVD & PARAMOUNT BLVD 125FT N & 41FT W C/L INT MKD (BM 7-8B 1970) | DY 8713 |
| BASELINE (1990) | 115.714 | RDBM TAG 1FT E BCR @ NE COR FIRESTONE BLVD & PARAMOUNT BLVD 38FT N & 78FT E C/L INT | DY 8714 |
| BASELINE (1990) | 117.147 | RAM SET 40FT E C/L PARAMOUNT BLVD & 3FT S C/L PROD 4TH PL | DY 8748 |
| BASELINE (1990) | 117.226 | CS MON IN WELL 8IN DN 1FT BK OF CB @ NW COR PARAMOUNT BLVD & 5TH ST 52FT N & 41FT W/O C/L INT MKD (BM 7-9B 1970) | DY 8749 |
| BASELINE (1990) | 121.880 | RDBM TAG 1FT S BCR @ SW COR PARAMOUNT BLVD & HARPER AVE 45FT S & 40FT W C/L INT | DY 8750 |
| BELLFLWR (1990) | 69.981 | L & T 2FT S BCR @ SW COR BELLFLOWER BLVD & FLOWER ST 55FT S & 30FT W C/L INT | DY 8755 |
| BASELINE (1990) | 58.803 | RDBM TAG 44FT N BCR @ NE COR BELLFLOWER BLVD & ASHWORTH ST 96FT N & 38FT E C/L INT | DY 8756 |

| QUAD-YEAR | ELEV | DESCRIPTION (INCLUDE QUAD AND YEAR IN DESCRIPTION) | BM NUMBER |
|--------------------|--------|---|-----------|
| BASELINE (1990) | 65.917 | RDBM TAG 1FT S/O BCR @ SW COR ATLANTIC AVE & COMPTON BLVD 38FT W & 76FT S/O C/L INT | DY 8757 |
| BELLFLWR (1990) | 64.094 | RDBM TAG 36FT N BCR @ NW COR ATLANTIC AVE & ALONDRA BL 112FT N & 42FT W C/L INT | DY 8758 |
| BELLFLWR (1990) | 64.415 | RDBM TAG 1FT E BCR @ SE COR ATLANTIC AVE & ALONDRA BLVD 40FT S & 71FT E C/L INT | DY 8759 |
| BELLFLWR (1990) | 59.559 | RAMSET 38FT W/O C/L ATLANTIC AVE & 61FT N/O C/L ATLANTIC PL (BETWEEN TWO C B) | DY 8760 |
| BELLFLWR (1990) | 59.808 | CITY OF LONG BEACH BR MON FL @ NE COR ATLANTIC AVE & ATLANTIC PL 39FT E & 50FT N/O C/L INT MKD (BM 1028 1967) 2FT N/O BCR | DY 8761 |
| BELLFLWR (1990) | 55.863 | CITY OF LONG BEACH MON IN WELL 12IN DN @ C/L INT ATLANTIC AVE & ARTESIA BLVD (USE NE EDGE) MKD (RE 3111 1959) | DY 8762 |
| BELLFLWR (1990) | 55.570 | CITY OF LONG BEACH MON IN WELL 12IN DN @ PI ATLANTIC AVE 260FT S C/L ARTESIA BLVD | DY 8763 |
| BELLFLWR (1990) | 51.262 | CITY OF LONG BEACH MON IN WELL 24IN DN @ C/L INT ATLANTIC AVE & HARDING ST | DY 8764 |
| BELLFLWR (1990) | 63.547 | USC & GS MON FL IN S WALL WEST ABUT OF UPRR BRIDGE OVER ATLANTIC AVE MKD (C789 1946) 5FT S/O C/L RR TRACKS | DY 8768 |
| BELLFLWR (1990) | 56.031 | RDBM TAG 3FT N BCR @ NW COR ATLANTIC AVE & DEL AMO BLVD 65FT N & 40FT W C/L INT | DY 8769 |
| BELLFLWR (1990) | 60.963 | CITY OF LONG BEACH MON FL 5FT S BCR @ SW COR DEL AMO BLVD & ORANGE AVE 70FT S & 30FT W/O C/L INT MKD (BM 255 1965) | DY 8771 |
| BASELINE (1990) | 46.752 | L & BRAD 15FT W BCR IN DEPRESSED CB @ SW COR DEL AMO BL & PARAMOUNT BL 42FT S & 82FT W C/L INT | DY 8775 |
| BASELINE (1990) | 47.061 | CSBM MON FL @ SW COR DEL AMO BL & PARAMOUNT BL 124FT S & 39FT W C/L INT MKD (BM 33-5A 1970) | DY 8776 |
| BELLFLWR (1990) | 55.202 | RDBM TAG 2FT W BCR @ SW COR ARTESIA BL & SUSANA RD 42FT S & 83FT W C/L INT | DY 8777 |
| BELLFLWR (1990) | 55.148 | RAMSET 4FT E BCR @ SE COR ARTESIA BL & SUSANA RD 42FT S & 76FT E C/L INT | DY 8778 |
| BELLFLWR (1990) | 53.736 | RDBM TAG 2FT W BCR @ SW COR ARTESIA BL & BUTLER AVE 42FT S & 40FT W C/L INT | DY 8779 |

| QUAD-YEAR | ELEV | DESCRIPTION (INCLUDE QUAD AND YEAR IN DESCRIPTION) | BM NUMBER |
|--------------------|---------|--|-----------|
| BELLFLWR (1990) | 53.738 | RDBM TAG 2FT E BCR @ SE COR ARTESIA BL & BUTLER AVE 42FT S & 40FT E C/L INT | DY 8780 |
| BELLFLWR (1990) | 53.460 | RAMSET 0.7FT S BCR INTO RET @ NW COR ARTESIA BL & ORANGE AVE 65FT N & 33FT W C/L INT | DY 8781 |
| BELLFLWR (1990) | 53.780 | RAMSET 9FT E BCR @ SE COR ARTESIA BLVD & ORANGE AVE 42FT S & 58FT E C/L INT | DY 8782 |
| BELLFLWR (1990) | 54.712 | CITY OF LONG BEACH MON FL @ SW COR ARTESIA BL & CHERRY AVE 43FT S & 63FT W C/L INT MKD (BM 150 1970) | DY 8783 |
| BELLFLWR (1990) | 54.605 | RAMSET 1FT E BCR @ SE COR ARTESIA BLVD & CHERRY AVE 42FT S & 62FT E C/L INT | DY 8784 |
| BELLFLWR (1990) | 26.855 | CS MON IN WELL 6IN DN 32FT W/O C/L CHARLEMAGNE & ON C/L WORDLOW RD MKD (BM 32-12 1953) | DY 8794 |
| BELLFLWR (1990) | 32.670 | CS MON IN WELL @ NE COR CHARLEMAGNE AVE & CONANT ST 29FT N & 136FT E C/L INT MKD (BM 32-11 1953) | DY 8795 |
| BASELINE (1990) | 127.652 | L & T 28FT E C/L ALAMEDA ST ON C/L PROD 85TH ST | DY 8797 |
| BASELINE (1990) | 58.307 | L & T 2FT N BCR @ NW COR ASHWORTH ST & WOODRUFF AVE 48FT N & 38FT W C/L INT | DY 8798 |
| BASELINE (1990) | 57.013 | RDBM TAG 1FT S BCR @ SW COR ASHWORTH ST & GRAYWOOD AVE 44FT S & 15FT W C/L INT | DY 8800 |
| BASELINE (1990) | 49.032 | CITY OF LONG BEACH MON IN WELL 8IN DN @ C/L INT PARAMOUNT BLVD & 55TH WAY (USE N EDGE) | DY 8801 |
| BASELINE (1990) | 48.070 | RDBM TAG 1FT W BCR @ SW COR PARAMOUNT BLVD & CANDLEWOOD ST 32FT S & 77FT W C/L INT | DY 8802 |
| BASELINE (1990) | 55.684 | RDBM TAG 7FT S BCR @ SW COR PARAMOUNT BLVD & CENTRALIA ST (W SERVICE RD) 53FT S & 76FT W/O C/L INT | DY 8803 |
| BASELINE (1990) | 44.500 | RAMSET 45FT N BCR @ NE COR CARSON ST & LAKEWOOD BLVD 106FT N & 42FT E C/L INT | DY 8804 |
| BASELINE (1990) | 38.421 | CITY OF LONG BEACH MON FL @ NE COR CLARK AVE & CARSON ST 42FT N & 54FT E C/L INT MKD (CLB 555 1970) | DY 8805 |
| BASELINE (1990) | 42.480 | RDBM TAG 1FT W BCR @ NW COR CARSON ST & SAN ANSELINA AVE 40FT N & 45FT W C/L INT | DY 8806 |

| QUAD-YEAR | ELEV | DESCRIPTION (INCLUDE QUAD AND YEAR IN DESCRIPTION) | BM NUMBER |
|--------------------|---------|--|-----------|
| BASELINE (1990) | 69.191 | RDBM TAG IN E CB 2FT N/O BCR @ NE COR STUDEBAKER RD & 166TH ST 42FT E/O & 72FT N/O C/L INT | DY 8808 |
| BASELINE (1990) | 50.606 | LACS MON FL @ S END OF CB IN W CB 45FT N/O BCR @ NW COR STUDEBAKER RD & SOUTH ST 43FT W & 122FT N/O C/L INT MKD (BM 9-8C 1970) | DY 8810 |
| BASELINE (1990) | 50.384 | RDBM TAG IN S CB 2FT W/O BCR @ SW COR STUDEBAKER RD & SOUTH ST 42FT S & 75FT W/O C/L INT | DY 8811 |
| BASELINE (1990) | 51.043 | RDBM TAG IN SO CB 2FT W/O BCR @ SE COR SOUTH ST & PALO VERDE AVE 42FT S & 65FT E/O C/L INT | DY 8812 |
| BASELINE (1990) | 47.843 | L & T IN E CB 2FT S/O BCR @ SE COR PALO VERDE AVE & CANDLEWOOD ST 75FT S & 30FT E/O C/L INT | DY 8813 |
| BASELINE (1990) | 26.459 | RDBM TAG IN S CB 1FT W/O BCR @ SE COR PALO VERDE AVE & WARDLOW RD 40FT S & 64FT E/O C/L INT | DY 8814 |
| BASELINE (1990) | 44.428 | LACS MON FL IN C B @ NW COR DEL AMO BLVD & PALO VERDE AVE 43FT N & 103 W C/L INT MKD (BM 9-10A 1965) | DY 8815 |
| LAKWOOD (1990) | 52.526 | LACS MON IN WELL 8IN DN @ NE COR CLARK AVE & SOUTH ST 53FT N & 57FT E C/L INT MKD (CLEARWATER H 5 RM 2) | DY 8819 |
| LAKWOOD (1990) | 54.489 | L AFC MON FL 36FT E BCR @ NE COR BELLFLOWER BL & SOUTH ST 46FT N & 114FT E C/L INT MKD (BM 4-503 A 1946) | DY 8824 |
| LAKWOOD (1990) | 54.386 | RDBM TAG 0.5FT W BCR INTO RET @ SE COR BELLFLOWER BL & SOUTH ST 46FT S & 75FT E C/L INT | DY 8825 |
| LAKWOOD (1990) | 53.281 | RDBM TAG 44FT W BCR @ SW COR SOUTH ST & WOODRUFF AVE 40FT S & 116FT W C/L INT | DY 8827 |
| LAKWOOD (1990) | 53.255 | RDBM TAG 1FT E BCR @ SE COR SOUTH ST & WOODRUFF AVE 40FT S & 76FT E C/L INT | DY 8828 |
| LAKWOOD (1990) | 52.669 | L & BRAD 38FT N/O SOUTH ST & ON C/L PROD SNOWDEN AVE | DY 8829 |
| BASELINE (1990) | 144.392 | LACE MON FL IN E END CATCH BASIN 21FT E/O BCR @ NE COR SLAUSON AVE & MALT AVE 86FT E & 41FT N/O C/L INT | DY 9213 |
| BASELINE (1990) | 143.998 | RD BM TAG IN CONC CB 3FT W/O BCR @ NW COR SLAUSON AVE & MALT AVE 52FT W & 40FT N/O C/L INT | DY 9214 |

| QUAD-YEAR | ELEV | DESCRIPTION (INCLUDE QUAD AND YEAR IN DESCRIPTION) | BM NUMBER |
|--------------------|---------|---|-----------|
| BASELINE (1990) | 138.482 | SPK IN CONC CB 5FT W/O BCR @ NW COR SLAUSON AVE & BOXFORD AVE 40FT N & 70 FT W/O C/L INT MKD (SD 3136) | DY 9215 |
| BASELINE (1990) | 135.544 | CS BM MON @ BK OF CB 40FT N/O C/L SLAUSON AVE & 135FT W/O C/L ZAMBRANO ST 74FT W/O BCR MKD (BM 4-198 1968) | DY 9216 |
| BASELINE (1990) | 139.574 | CS MON 1IN UP 50FT S/O C/L SLAUSON AVE & 0.25MI W/O C/L EASTERN AVE NR TP #1007282H MKD (CO SUR RE 329) USE N EDGE | DY 9218 |
| BASELINE (1990) | 142.900 | RD BM TAG IN CONC CB 2FT E/O BCR @ NE COR SLAUSON AVE & HELIOTROPE AVE 36FT N & 37FT E/O C/L INT | DY 9219 |
| BASELINE (1990) | 143.028 | RD BM TAG IN CONC CB 2FT W/O BCR @ NW COR SLAUSON AVE & HELIOTROPE AVE 36FT N & 37FT W/O C/L INT | DY 9220 |
| BASELINE (1990) | 156.795 | RD BM TAG IN CONC CB 2FT E/O BCR @ NE COR SLAUSON AVE & GIFFORD AVE 33FT E & 35FT N/O C/L INT | DY 9221 |
| BASELINE (1990) | 157.195 | RD BM TAG IN CONC CB 2FT W/O BCR @ NW COR SLAUSON AVE & GIFFORD AVE 32FT W & 35FT N/O C/L INT | DY 9222 |
| BASELINE (1990) | 166.012 | RD BM TAG IN CONC CB 2FT W/O BCR @ NW COR SLAUSON AVE & DOWNEY RD 54FT W & 36FT N C/L INT | DY 9223 |
| BASELINE (1990) | 166.166 | L&CS TAG IN CONC CB 13FT E/O BCR @ NE COR SLAUSON AVE & BOYLE AVE 70FT E & 35FT N/O C/L INT | DY 9224 |
| BASELINE (1990) | 173.755 | RD BM TAG IN CONC CB 2FT E/O BCR @ NE COR SOTO ST & SLAUSON AVE 65FT E & 35FT N/O C/L INT | DY 9225 |
| BASELINE (1990) | 176.899 | CS MON IN WELL DN 8IN NEAR C/L SLAUSON AVE 15FT W/O C/L PACIFIC AVE MKD (LA CO SUR CONTROL SYS TRAVERSE STA WATTS J-2B RE4233 1938) | DY 9226 |
| BASELINE (1990) | 68.235 | CS MON IN WELL 1FT BK OF WK @ NE COR ALONDRA BLVD & CLARK AVE 55FT N & 52FT E/O C/L INT | DY 9285 |
| BASELINE (1990) | 69.590 | LS TAG IN CB 11FT W/O BCR @ NW COR ALONDRA BLVD & VIRGINIA AVE 54FT W & 40FT N/O C/L INT (MKD LS 2428) | DY 9286 |
| BASELINE (1990) | 69.135 | RAMSET CTR CB RET @ NE COR ALONDRA BLVD & LAKEWOOD BLVD 42FT N & 57FT E/O C/L INT | DY 9287 |

| QUAD-YEAR | ELEV | DESCRIPTION (INCLUDE QUAD AND YEAR IN DESCRIPTION) | BM NUMBER |
|--------------------|---------|---|-----------|
| BASELINE (1990) | 68.017 | L&BR 2FT E/O BCR @ NW COR ALONDRA BLVD & PITTS AVE 42FT N & 39FT W/O C/L INT | DY 9288 |
| BASELINE (1990) | 66.152 | CS MON IN WELL 1FT BK OF WK @ NE COR ALONDRA BL & DOWNEY AVE 51FT N & 59FT E/O C/L INT MKD (BM 6-10A) | DY 9289 |
| BASELINE (1990) | 68.890 | L&BN 6FT N/O BCR @ NW COR ALONDRA BLVD & ORIZABA AVE 73FT N & 28FT W/O C/L INT | DY 9290 |
| BASELINE (1990) | 68.069 | CS MON FL IN S WALL C B @ NW COR PARAMOUNT BLVD & ALONDRA BLVD 42FT W & 120FT N/O C/L INT MKD (BM 6-11B 1975) | DY 9292 |
| BASELINE (1990) | 72.332 | CS MON 1FT BK OF WK CTR OF CB RET @ SW COR PARA- MOUNT BLVD & COMPTON BLVD 56FT W & 50FT S/O C/L INT MKD (BM 6-13A 1970) | DY 9293 |
| BASELINE (1990) | 109.496 | L&T 1FT S/O BCR @ SE COR PARAMOUNT BLVD STEWART & GRAY RD 38FT E & 76FT S/O C/L INT | DY 9295 |
| BASELINE (1990) | 103.764 | L&FC TAG IN CTR OF CB RET @ NW COR PARAMOUNT BL & QUILL DR 29FT N & 47FT W/O C/L INT | DY 9296 |
| BASELINE (1990) | 90.081 | L&BD 1FT S/O BCR @ SE COR PARAMOUNT BLVD & ADOREE AVE 38FT E & 44FT S/O C/L INT | DY 9298 |
| BASELINE (1990) | 72.204 | L&BN IN N CB COMPTON BLVD 32FT N & 50FT W/O C/L INT VERMONT AVE | DY 9301 |
| BASELINE (1990) | 69.619 | L&BD CTR CB RET @ SE COR COMPTON BLVD & MINNE- SOTA AVE 36FT S & 43FT E/O C/L INT | DY 9302 |
| BASELINE (1990) | 68.745 | CSBM MON IN WELL 1FT BK OF WK @ W EDGE OF DRIVE- WAY TO FIRE STATION NO 31 210FT E & 41FT N/O C/L INT COMPTON BLVD & GARFIELD AVE MKD (BM 6-14A) | DY 9304 |
| BASELINE (1990) | 69.204 | L&T N CB COMPTON BLVD 30FT N & 58FT E/O C/L INT TEXACO AVE (TO THE NORTH) | DY 9305 |
| BASELINE (1990) | 69.653 | L&T 1FT W/O BCR @ SW COR COMPTON BLVD & TEXACO AVE (TO THE SOUTH) 61FT W & 32FT S/O C/L INT | DY 9306 |
| BASELINE (1990) | 88.378 | LAFC MON IN E ABUT @ SE COR COMPTON BLVD & BR OVER LA RIVER 32FT S C/L MKD (BM 4-26) | DY 9308 |
| BASELINE (1990) | 68.474 | L&BN IN S CB COMPTON BLVD 41FT S & 11FT W/O C/L PROD HARRIS AVE TO THE N | DY 9311 |
| BASELINE (1990) | 68.382 | L&BN 1FT W/O BCR @ NW COR COMPTON BLVD & HARRIS AVE TO THE N 36FT W & 32FT N/O C/L INT | DY 9312 |

| QUAD-YEAR | ELEV | DESCRIPTION (INCLUDE QUAD AND YEAR IN DESCRIPTION) | BM NUMBER |
|--------------------|---------|---|-----------|
| BASELINE (1990) | 71.319 | RDBM TAG IN CB 5FT E BCR INTO RET @ SW COR ROSECRANS AVE & ALAMEDA ST (E BARREL) 33FT S & 33FT W/O C/L INT | DY 9313 |
| BASELINE (1990) | 78.036 | RAMSET 2FT S BCR @ SE COR ALAMEDA ST E BBL 24FT E/O & 52FT S/O C/L INT BANNING ST | DY 9314 |
| BASELINE (1990) | 87.507 | RAMSET IN CTR CB RET @ SE COR ALAMEDA ST E BBL & LYNWOOD RD 20FT E & 32FT S/O C/L INT | DY 9315 |
| BASELINE (1990) | 112.835 | RDBM TAG IN CB 4FT S/O BCR @ SE COR (E BARREL) ALAMEDA ST & KANSAS AVE 18FT E & 37FT S/O C/L INT | DY 9317 |
| BASELINE (1990) | 117.991 | RDBM TAG 4FT S BCR @ SE COR E BBL ALAMEDA ST IN NLY WALL C B 19FT E & 45FT S C/L INT SOUTHERN AV | DY 9318 |
| BASELINE (1990) | 138.803 | CS MON IN WELL 30FT E & 15FT S/O APPROX C/L INT W BBL ALAMEDA ST & NADEAU ST USE W EDGE | DY 9321 |
| BASELINE (1990) | 149.270 | L&T 28FT E C/L ALAMEDA ST NEAR C/L PROD 76TH ST | DY 9322 |
| BASELINE (1990) | 161.109 | L&T 20FT W C/L E BBL ALAMEDA ST ON OR NEAR C/L PROD ZOE AVE | DY 9323 |
| BASELINE (1990) | 91.755 | L AFC MON FL IN WK @ SW END BRDG NO B977 OVER SAN GABRIEL RIVER 41FT S/O C/L ALONDRA BLVD MKD (BM 075-00877 1974) | DY 9375 |
| BASELINE (1990) | 89.810 | PK N IN CONC CB @ SE END BRDG NO B977 OVER SAN GABRIEL RIVER 37FT S/O C/L ALONDRA BLVD | DY 9376 |
| BASELINE (1990) | 72.991 | CS MON FL IN S WALL C B @ NW COR STUDEBAKER RD & ALONDRA BLVD 43FT W & 110FT N/O C/L INT MKD (BM 9-3C) | DY 9377 |
| BASELINE (1990) | 71.979 | L&BR CTR OF CB RET @ SE COR ALONDRA BLVD & STUDEBAKER RD 53FT E & 53FT S/O C/L INT | DY 9378 |
| BASELINE (1990) | 70.466 | RDBM TAG 3FT S/O BCR @ SE COR STUDEBAKER RD & FALCON WAY EAST 50FT S & 42FT E/O C/L INT (ENT RD TO CERRITOS COLLEGE) | DY 9379 |
| BASELINE (1990) | 63.766 | RDBM TAG IN S WALL C B @ NE COR STUDEBAKER RD & ON RAMP TO ARTESIA FWY (91) ON S SIDE FWY 43FT N & 43FT E/O C/L INT | DY 9381 |
| BASELINE (1990) | 61.021 | CS BM MON FL IN E WALL C B @ NW COR ARTESIA BLVD & STUDEBAKER RD 47FT N & 151FT W/O C/L INT 75FT W/O BCR MKD (BM 9-6C 1965) | DY 9382 |

| QUAD-YEAR | ELEV | DESCRIPTION (INCLUDE QUAD AND YEAR IN DESCRIPTION) | BM NUMBER |
|--------------------|--------|---|-----------|
| BASELINE (1990) | 55.750 | CS BM MON FL IN S WALL C B 5FT N/O BCR @ NW COR STUDEBAKER RD & 183RD ST 69FT N & 43FT W/O C/L INT MKD (BM 9-7B 1975) | DY 9383 |
| BASELINE (1990) | 69.679 | L AFC MON FL IN WK @ W END BRDG NO B972 OVER SAN GABRIEL RIVER 42FT S/O C/L SOUTH ST MKD (BM 074-02797 1974) | DY 9385 |
| BASELINE (1990) | 39.750 | RDBM TAG 3FT S/O BCR @ SW COR PALO VERDE AVE & ARBOR RD 30FT W & 58FT S/O C/L INT | DY 9386 |
| BASELINE (1990) | 25.192 | CITY OF LONG BEACH MON IN WELL @ C/L INT PALO VERDE AVE & WARDLOW RD MKD (C L B 1958 RE 3111) | DY 9387 |
| BASELINE (1990) | 24.071 | RAMSET 1FT S/O BCR @ SE COR PALO VERDE AVE & METZ ST 30FT E & 57FT S/O C/L INT | DY 9388 |
| BASELINE (1990) | 25.397 | L AFC MON FL IN CB 52FT S/O BCR @ SW COR LOS COYOTES DIAG & SPRING ST 137FT S & 37FT W/O C/L INT MKD (BM 120-81 1961) | DY 9389 |
| BASELINE (1990) | 23.075 | L AFC MON FL IN CB 75FT S/O BCR @ SW COR BELLFLOWER BLVD & SPRING ST 40FT W & 140FT S/O C/L INT MKD (BM 120-82 1961) | DY 9390 |
| BASELINE (1990) | 22.960 | CITY OF LONG BEACH MON IN WELL 8IN DN @ C/L INT SPRING ST & CHARLEMAGNE AVE MKD (C L B 1968 KE 3111) | DY 9391 |
| BASELINE (1990) | 12.533 | CS MON IN VERT FACE WALL @ SE COR SPRING ST UNDERPASS & MAIN RNWY OF L B AIRPORT 34FT S/O C/L SPRING ST 3FT ABOVE CB MKD (BM 8-39B 1965- RE 5869) USE CTR PUNCH MARK | DY 9392 |
| BASELINE (1990) | 13.498 | CS BM MON IN VERT FACE WALL @ NW COR SPRING ST UNDERPASS & MAIN RNWY OF L B AIRPORT 34FT N/O C/L SPRING ST 3FT ABOVE CB MKD (BM 8-39C 1965 RE 5869) USE CTR PUNCH MARK | DY 9393 |
| BASELINE (1990) | 64.321 | L&BR 17FT W/O BCR @ NW COR WARDLOW RD & WALNUT AVE 50FT W & 28FT N/O C/L INT | DY 9395 |
| BASELINE (1990) | 29.211 | L&BN @ BCR @ SE COR PALO VERDE AVE & HARCO ST 30FT E & 58FT S/O C/L INT MKD (KN 233) | DY 9396 |
| BASELINE (1990) | 54.440 | L&RCE TAG NO 12795 1FT N/O BCR @ NE COR PALO VERDE AVE & ANDY ST 55FT N & 32FT E/O C/L INT | DY 9397 |
| BASELINE (1990) | 39.842 | L&BR CTR CB RET @ SW COR FACULTY AVE & CARSON ST 33FT W & 48FT S C/L INT | DY 9400 |

| QUAD-YEAR | ELEV | DESCRIPTION (INCLUDE QUAD AND YEAR IN DESCRIPTION) | BM NUMBER |
|--------------------|--------|--|-----------|
| BASELINE (1990) | 38.271 | PK & L NR S END E ABUT CONC BR 50FT S C/L CARSON ST & 194FT E/O C/L GREENBIER RD | DY 9401 |
| BELLFLWR (1990) | 67.248 | CITY OF LONG BEACH MON 1FT BK/O CB @ NE COR CARSON ST & CHERRY AVE 7FT W/O BCR 45FT N & 77FT E/O C/L INT MKD (CLB BM 444 1972) | DY 9416 |
| BELLFLWR (1990) | 67.600 | L&BR CTR CB RET @ SW COR CARSON ST & CHERRY AVE 50FT S & 60FT W/O C/L INT | DY 9417 |
| BELLFLWR (1990) | 56.126 | CITY OF LONG BEACH MON FL 1FT N/O BCR @ NE COR PARAMOUNT BLVD & 63RD ST 40FT N & 40FT E C/L INT MKD (LBBM 1172 1966) | DY 9419 |
| BELLFLWR (1990) | 61.269 | RAMSET 12FT E/O BCR @ SE COR PARAMOUNT BLVD & 68TH ST 69FT E & 20FT S/O C/L INT | DY 9420 |
| BELLFLWR (1990) | 60.533 | RDBM TAG 2FT E/O BCR @ NE COR DEL AMO BLVD & ORANGE AVE 42FT N & 50FT E/O C/L INT | DY 9432 |
| BELLFLWR (1990) | 27.409 | RDBM TAG IN S WALL CATCH BASIN 7FT N/O BCR @ NW COR CHARLEMAGNE AVE & WARDLOW RD 18FT W & 73FT N/O C/L INT | DY 9434 |
| BELLFLWR (1990) | 33.771 | L&T 0.5 W/O BCR @ SW COR CONANT ST & CHARLEMAGNE AVE 50FT W & 28FT N/O C/L INT | DY 9435 |
| BELLFLWR (1990) | 37.319 | L&T IN N CB NR CTR OF CURVE CHARLEMAGNE AVE & PARKCREST ST ON PROD OF W CB CHARLEMAGNE AVE & 5FT S/O C/L PROD PARKCREST ST | DY 9436 |
| BELLFLWR (1990) | 37.435 | L&N 3FT E/O BCR @ SW COR PARKCREST ST & CHARLEMAGNE AVE 15FT S & 77FT W/O C/L INT | DY 9437 |
| BASELINE (1990) | 38.286 | L&BR CTR CB RET @ SW COR CARSON ST & CLARK AVE 34FT W & 49FT S/O C/L INT | DY 9438 |
| BASELINE (1990) | 55.619 | RDBM TAG 1FT W/O C B SO CB SERVICE RD CARSON ST @ LEVELSIDE AVE 60FT N & 5FT E C/L PROD | DY 9534 |
| BASELINE (1990) | 55.712 | RDBM TAG IN N CB SERVICE RD CARSON ST 3FT E/O C B 83FT N & 44FT W/O C/L INT LEVELSIDE AVE | DY 9535 |
| BASELINE (1990) | 60.301 | RD TAG @ NE COR CARSON ST & PARAMOUNT BLVD 79FT N & 42FT E/O C/L INT 1FT N/O BCR | DY 9536 |
| BASELINE (1990) | 60.544 | RD TAG @ SW COR CARSON ST & PARAMOUNT BLVD 42FT S & 68FT W/O C/L INT 1FT W/O BCR | DY 9537 |
| BASELINE (1990) | 22.788 | RDBM TAG IN E CB WOODRUFF AVE @ SE COR SPRING ST 84FT S & 44FT E C/L INT | DY 9539 |

| QUAD-YEAR | ELEV | DESCRIPTION (INCLUDE QUAD AND YEAR IN DESCRIPTION) | BM NUMBER |
|--------------------|---------|--|-----------|
| BASELINE (1990) | 21.528 | RDBM TAG 1FT W BCR @ NW COR SPRING ST & PALO VERDE AVE 42FT N & 58FT W C/L INT | DY 9540 |
| BASELINE (1990) | 22.134 | RDBM TAG 1FT E BCR @ NE COR SPRING ST & & PALO VERDE AVE 42FT N & 58FT E C/L INT | DY 9541 |
| BELLFLWR (1990) | 52.716 | RDBM TAG IN W/LY CB SERVICE RD 10FT N/O BCR @ NE COR C B 65FT N & 86FT W/O C/L INT ATLANTIC AVE & HARDING ST | DY 9646 |
| BELLFLWR (1990) | 48.886 | RDBM TAG IN WALK TO BANK 48FT W & 87FT N/O C/L INT ATLANTIC AVE & SOUTH ST | DY 9648 |
| BASELINE (1990) | 98.389 | RDBM TAG 2FT E/O BCR @ NE COR IMPERIAL HWY & PARAMOUNT BLVD 67FT E & 40FT N/O C/L INT | DY 9658 |
| SO GATE (1990) | 142.761 | RDBM TAG IN CB 1FT E/O BCR @ SE COR FLORENCE AVE & STATE ST 35FT S & 49FT E/O CL INT | DY 9724 |
| SO GATE (1990) | 155.272 | RDBM TAG W CB 20FT N/O BCR @ NW COR OTIS AVE & 61ST ST 44FT N & 15FT W/O C/L INT | DY 9727 |
| SO GATE (1990) | 71.736 | L&T IN CB 14FT N/O BCR INTO RET @ SW COR ROSECRANS AVE & ORANGE AVE 52FT S & 23FT W/O C/L INT | DY 9733 |
| BASELINE (1990) | 132.761 | RDBM TAG 1FT N/O CF @ E END C B 145FT E/O C/L ALEXANDER ST & 40FT N/O C/L SLAUSON AVE 0.2 MILE E/O EASTERN AVE | DY 9761 |
| BASELINE (1990) | 134.983 | RD BM TAG @ SO END C B 1FT E/O CB 43FT E/O C/L EASTERN AVE & 84FT N/O C/L SLAUSON AVE | DY 9762 |
| BASELINE (1990) | 135.362 | RD BM TAG E END C B 15FT W/O BCR 96FT W/O C/L EASTERN AVE & 38FT S/O SLAUSON AVE | DY 9763 |
| BELLFLWR (1990) | 44.008 | RDBM TAG IN CB 2FT N/O BCR 33FT E/O C/L ATLANTIC AVE & 37FT S/O C/L MARKET ST | DY 10059 |
| BELLFLWR (1990) | 55.232 | CITY OF LONG BEACH BM MON FL 1FT BACK OF CB 1FT W/O BCR 58FT N/O C/L DEL AMO BLVD & 108FT W/O C/L CHERRY AVE MKD (CLB BM 1979) | DY 10061 |
| BELLFLWR (1990) | 55.919 | L&T IN CB 55FT E/O BCR 42FT N/O C/L DEL AMO BLVD & 152FT E/O C/L CHERRY AVE MKD (BM) | DY 10062 |
| BELLFLWR (1990) | 64.617 | LAFB BM MON FL 4FT IS/O BCR 42FT E/O C/L BELLFLOWER BLVD & 111FT S/O C/L ARTESIA BLVD MKD (FCBM 74-20 C 1946) | DY 10063 |

| QUAD-YEAR | ELEV | DESCRIPTION (INCLUDE QUAD AND YEAR IN DESCRIPTION) | BM NUMBER |
|--------------------|---------|--|-----------|
| BASELINE (1990) | 23.144 | CITY OF LONG BEACH MON FL 1FT BACK OF CB 42FT N/O C/L SPRING ST & 44FT W/O C/L CHARLEMAGNE AVE 8FT W/O BCR MKD (RE 3111 1033 CLB 1969) | DY 10064 |
| SO GATE (1990) | 155.434 | L&BN 8FT E/O BCR 35FT S/O C/L FLORENCE AVE & 55FT E/O C/L SANTA FE AVE @ E END C B | DY 10065 |
| SO GATE (1990) | 71.754 | L&T CTR CB RET 52FT S/O C/L ROSECRANS AVE & 24FT E/O C/L ORANGE AVE | DY 10066 |
| SO GATE (1990) | 72.579 | RDBM TAG 2FT E/O BCR 42FT S/O C/L ROSECRANS AVE & 75FT E/O C/L GARFIELD AVE | DY 10067 |
| BASELINE (1990) | 38.805 | L&BR MCR SW COR 46FT W/O C/L ALAMEDA ST (W BARREL) & 55FT S/O C/L DEL AMO BLVD | DY 10101 |
| BASELINE (1990) | 38.128 | L&BR MCR NE COR 45FT E/O C/L ALAMEDA ST (W BARREL) & 55FT N/O C/L DEL AMO BLVD | DY 10102 |
| BASELINE (1990) | 46.230 | L&LS TAG #2760 IN CB NEAR C/L PROD LAUREL PARK RD FROM WEST IN THE E CB OF ALAMEDA ST (WEST BARREL) | DY 10138 |
| BASELINE (1990) | 59.844 | RDBM TAG IN CB @ NE COR ALAMEDA ST (W BARREL) & AUTO DR SO 65FT N & 40FT E/O C/L INT (2FT N/O BCR) | DY 10139 |
| BASELINE (1990) | 64.486 | L&T IN CB @ NE COR ALAMEDA ST (W BARREL) & ALONDRA BLVD 50FT E & 30FT N/O C/L INT (5FT E/O BCR) | DY 10140 |
| BASELINE (1990) | 113.587 | RDBM TAG IN CB @ NE COR ALAMEDA ST (W BARREL) & TWEEDY BLVD 58FT N & 29FT E/O C/L INT (2FT N/O BCR) | DY 10141 |
| BASELINE (1990) | 124.516 | L&T IN CB @ SE COR ALAMEDA ST & FIRESTONE BLVD 29FT E & 60FT S/O C/L INT (5FT N/O BCR) STAMPED (BM) | DY 10142 |
| BASELINE (1990) | 139.586 | RDBM TAG IN CB @ SW COR ALAMEDA ST & NADEAU ST 35FT W & 60FT S/O APPROX C/L INT (W BARREL) 2FT S/O BCR | DY 10143 |
| BASELINE (1990) | 165.975 | L&T IN CB # SE COR ALAMEDA ST (W BARREL) & GAGE AVE 40FT S & 25FT E/O C/L INT (6FT N/O BCR) STAMPED (BM) | DY 10144 |
| BASELINE (1990) | 175.271 | RDBM TAG IN CB @ SE COR ALAMEDA ST (E BARREL) & RANDOLPH ST (S BARREL) 50FT S & 20FT E/O APPROX C/L INT (6FT S/O BCR) | DY 10145 |

| QUAD-YEAR | ELEV | DESCRIPTION (INCLUDE QUAD AND YEAR IN DESCRIPTION) | BM NUMBER |
|--------------------|---------|---|-----------|
| BASELINE (1990) | 179.372 | RDBM TAG IN CB @ SW COR ALAMEDA ST (W BARREL) & SLAUSON AVE 27FT W & 55FT S/O C/L INT (3FT S/O BCR) | DY 10146 |
| BASELINE (1990) | 176.879 | PK W/WASHER STAMPED BM 176.864 IN CB @ SE COR SLAUSON AVE & PACIFIC BLVD 100FT E & 35FT S/O C/L INT (20FT E/O BCR) | DY 10147 |
| BASELINE (1990) | 148.596 | RDBM TAG IN CB @ SE COR SLAUSON AVE & ATLANTIC BLVD 41FT S & 50FT E/O C/L INT (1FT W/O BCR) | DY 10197 |
| BASELINE (1990) | 156.027 | RDBM TAG N CB SLAUSON AVE 40FT N/O C/L @ OR NEAR C/L PROD TRIANGLE DR FROM THE SOUTH (2FT W/O E END C B) | DY 10198 |
| BASELINE (1990) | 158.971 | RDBM TAG @ SW COR SLAUSON AVE & GREENWOOD AVE 42FT S & 66FT W/O C/L INT (1FT W/O BCR) | DY 10199 |
| BASELINE (1990) | 148.329 | RDBM TAG NE COR CONC HDWL TO ELECTRIC TOWER #BTL1-258D4 193FT E/O E END BRIDGE #53-212 OVER RIO HONDO & 40FT S/O C/L TELEGRAPH RD | DY 10200 |
| BASELINE (1990) | 142.747 | CALIF DIV OF HWY MON IN CB @ NW COR OF TELEGRAPH RD & PARAMOUNT BLVD 40FT N & 54FT W/O C/L INT 4FT W/O BCR MKD (K4 1941 5 1972) | DY 10201 |
| BASELINE (1990) | 64.417 | DPW BM TAG IN S CB @ SW COR COMPTON BLVD & SANTA FE AVE 78FT W & 42FT S/O C/L INT (1FT W/O BCR) | DY 10211 |
| BASELINE (1990) | 64.730 | DPW BM TAG IN N CB @ NW COR COMPTON BLVD & SANTA FE AVE 77FT W & 42FT N/O C/L INT (1FT E/O BCR) | DY 10212 |
| BASELINE (1990) | 66.285 | DPW BM TAG IN S CB @ SW COR COMPTON BLVD & BURRIS AVE 28FT E & 48FT S/O C/L INT (1FT W/O BCR) | DY 10213 |
| BASELINE (1990) | 66.362 | DPW BM TAG IN CB @ NE COR COMPTON BLVD & BURRIS AVE 28FT E & 45FT N/O C/L INT (11FT W/O BCR-INTO RET) | DY 10214 |
| BASELINE (1990) | 66.184 | DPW BM TAG IN S CB @ SE COR COMPTON BLVD & ATLANTIC AVE 63FT E & 30FT S/O C/L INT (1FT E/O BCR) | DY 10215 |
| BASELINE (1990) | 68.509 | DPW BM TAG N CB @ NW COR COMPTON BLVD & GIBSON AVE 46FT W & 35FT N/O C/L INT (1FT W/O BCR) | DY 10216 |
| BASELINE (1990) | 68.705 | DPW BM TAG IN N CB @ NW COR COMPTON BLVD & ORANGE AVE 36FT N & 55FT W/O C/L INT (2FT E/O BCR-INTO CB RET) | DY 10217 |

| QUAD-YEAR | ELEV | DESCRIPTION (INCLUDE QUAD AND YEAR IN DESCRIPTION) | BM NUMBER |
|--------------------|---------|--|-----------|
| BASELINE (1990) | 69.178 | DPW BM TAG IN E CB @ SE COR COMPTON BLVD & ORANGE AVE 68FT S & 32FT E/O C/L INT (1FT S/O BCR) | DY 10218 |
| BELLFLWR (1990) | 69.962 | RDBM TAG IN S CB @ SW COR COMPTON BLVD & MINNESOTA AVE 45FT W & 34FT S/O C/L INT (1FT W/O BCR) | DY 10219 |
| BASELINE (1990) | 76.428 | DPW BM TAG W CB @ SW COR PARAMOUNT BLVD & ROSE ST 33FT S/O & 42FT W/O C/L INT (1FT N/O BCR) | DY 10220 |
| BASELINE (1990) | 134.550 | DPW BM TAG E CB @ NE COR PARAMOUNT BLVD & GALLATIN RD 38FT E/O & 64FT N/O C/L INT 1FT S/O BCR | DY 10221 |
| BASELINE (1990) | 68.322 | RDBM TAG IN S CB @ SE COR ALONDRA BLVD & PARAMOUNT BLVD 68FT E & 43FT S/O C/L INT (8FT W/O BCR) | DY 10222 |
| BASELINE (1990) | 67.244 | DPW BM TAG IN S CB @ SW COR ALONDRA BLVD & HAYTER AVE 42FT S & 25FT W/O C/L INT (1FT W/O BCR) | DY 10223 |
| BASELINE (1990) | 69.436 | DPW BM TAG IN N CB @ NE COR ALONDRA BLVD & VIRGINIA AVE 42FT N & 51FT E/O C/L INT (1FT E/O BCR) | DY 10224 |
| BASELINE (1990) | 31.747 | DPW BM TAG IN SW COR C B 44FT E & 27FT N/O C/L INT DOMINGUEZ ST & PROSPECT AVE | DY 10228 |
| BASELINE (1990) | 53.781 | DPW BM TAG IN W CB @ NE COR CHERRY AVE & WARDLOW RD 40FT E & 50FT N/O C/L INT (1FT N/O ECR) | DY 10229 |
| BASELINE (1990) | 53.872 | DPW BM TAG IN W CB @ SE COR CHERRY AVE & WARDLOW RD 45FT E & 47FT S/O C/L INT (1FT S/O ECR) | DY 10230 |
| BASELINE (1990) | 78.840 | DPW BM TAG IN E CB @ SE COR CHERRY AVE & SPRING ST 74FT S & 43FT E/O C/L INT (1FT N/O BCR) | DY 10231 |
| BASELINE (1990) | 31.854 | DPW BM TAG IN NW COR SPRING ST & ENT TO NATIONAL GUARD UNIT-35FT N & 1320FT E/O INT SPRING ST & REDONDO BEACH BLVD | DY 10232 |
| BASELINE (1990) | 22.431 | DPW BM TAG IN N CB @ NE COR SPRING ST (N SERVICE RD) & RUTGERS AVE 82FT N & 46FT E/O C/L INT (1FT E/O BCR) | DY 10233 |
| BASELINE (1990) | 23.214 | RAM SET N CB @ NE COR SPRING ST & WOODRUFF AVE 48FT N & 75FT E/O C/L INT (6FT E/O BCR) | DY 10234 |

| QUAD-YEAR | ELEV | DESCRIPTION (INCLUDE QUAD AND YEAR IN DESCRIPTION) | BM NUMBER |
|--------------------|--------|---|-----------|
| BASELINE (1990) | 26.684 | DPW BM TAG IN W CB @ NW COR PALO VERDE AVE & WARDLOW RD 77FT N & 30FT W/O C/L INT (1FT N/O BCR) | DY 10236 |
| BASELINE (1990) | 37.297 | L&BN IN E CB @ SE COR PALO VERDE AVE & CENTRALIA ST 57FT S & 31FT E/O C/L INT (1FT S/O BCR) | DY 10237 |
| BASELINE (1990) | 55.629 | L&BRD IN CB @ SW COR STUDEBAKER RD & 183RD ST 50FT S & 50FT W/O C/L INT (18FT N/O BCR-IN CB RET) | DY 10238 |
| BASELINE (1990) | 49.370 | L.B. CITY TAG MKD LS#4866 E CB PARAMOUNT BLVD 40FT E & 30FT S/O C/L INT PARAMOUNT BLVD & 55TH WAY (TO THE EAST) USE N EDGE | DY 10239 |
| BELLFLWR (1990) | 60.566 | CITY OF LONG BEACH MON FLUSH 1FT W/O BCR & 1FT N/O CB @ NW COR PARAMOUNT BLVD & ARTESIA BLVD 65FT W & 46FT N/O C/L INT MKD (C.L.B. BM 1981) | DY 10325 |
| BELLFLWR (1990) | 60.608 | DPW BM TAG 1FT N/O BCR @ NE COR PARAMOUNT BLVD & ARTESIA BLVD 45FT E & 70FT N/O C/L INT | DY 10326 |
| BELLFLWR (1990) | 65.684 | DPW BM TAG 1FT S/O BCR @ SW COR PARAMOUNT BLVD & JACKSON ST 42FT W & 55FT S/O C/L INT | DY 10327 |
| BELLFLWR (1990) | 65.685 | DPW BM TAG 1FT N/O BCR @ NW COR PARAMOUNT BLVD & JACKSON ST 42FT W & 55FT N/O C/L INT | DY 10328 |
| BELLFLWR (1990) | 48.691 | DPW BM TAG 1FT W/O BCR @ SE COR ATLANTIC AVE & SOUTH ST 50FT E & 30FT S/O C/L INT | DY 10356 |
| BELLFLWR (1990) | 44.605 | DPW BM TAG 2FT W/O BCR @ NW COR ATLANTIC AVE & MARKET ST 48FT W & 26FT E/O C/L INT | DY 10357 |
| BELLFLWR (1990) | 54.857 | DPW BM TAG 5FT N/O BCR @ NE COR ATLANTIC AVE & DEL AMO BLVD 40FT E & 88FT N/O C/L INT | DY 10358 |